

# THE WAYNE HERALD

WAYNE, NEBRASKA 68787

MONDAY, AUGUST 29, 1988 — 109TH YEAR — NO. 91

THIS ISSUE — 1 SECTION, 8 PAGES

LOCAL DELIVERY 23¢ — NEWSSTAND 45¢

## At A Glance

### Paper drive

The Wayne Boy Scouts paper drive date has been set for Saturday, Sept. 10.

### Telethon

The Wayne Jaycees will be hosting the pledge center in Wayne for the 1988 Jerry Lewis Labor Day Telethon to benefit the Muscular Dystrophy Association.

The 23rd annual event will be broadcast by KCAU/KCAN, Channel 9/8 at 8 p.m. on Sunday, Sept. 4 and continue to 4 p.m. on Monday, Sept. 5. The "Telethon", which will originate live from Caesar's Palace in Las Vegas, will be carried throughout the country by some 200 "Love Network" stations.

The Wayne Jaycees will be taking your pledges throughout the telethon at 375-4006.

### Deadline

The second half of the 1987 real estate taxes will be delinquent Sept. 1 and will start drawing 14 percent interest after that date.

### Learning ag

Family farmers from the area will host 14 Congressional aides who will learn about Nebraska agriculture from Aug. 26-30. This is the eighth annual tour for Congressional aides sponsored by the Nebraska Livestock Feeders Association through Hal Daub's office.

### Happy hunting

The Madison County Visitors Bureau is working to promote hunting in northeast Nebraska — particularly in Madison, Pierce, Stanton and Wayne Counties.

It is the goal of the Visitors Bureau to bring outstate hunters to this area. A survey sent to landowners in the four counties was returned showing a positive interest in hunting and the potential revenue it offers.

In a cooperative effort with the Northeast Community College, Madison and Wayne County extension services, a meeting has been planned for Sept. 8 at 7:30 p.m. at the Northeast Community College cafeteria in Norfolk to discuss implementation of such a program.

An attorney and an insurance representative, along with a Nebraska Game and Parks representative, will be on hand at the meeting.

Addressed will be liability insurance, legal responsibilities, habitat creation and promotion and advertising.

The meeting is open to all farmers and landowners in the four counties.

### Hey bikers!

The annual St. Jude Bike-A-Thon has been scheduled for Sunday, Sept. 11 at the Wayne High School parking lot.

For more information, contact Mary Hamer after 4 p.m. at 375-5328 for pledge sheets and further information. Actual riding will be from 1-3 p.m. with check-in time at 12:30.

Funds will go to the St. Jude's Children Hospital and for cancer research.



Holly Hatter, 9th Grade

Extended Weather Forecast: Monday through Wednesday: dry with moderate temperatures; highs, upper 70s to lower 80s; overnight lows, 50s.

# Johnsons retrace Lewis and Clark expedition

By Chuck Hackenmiller  
Managing Editor

A textbook report of the Lewis and Clark expedition, detailing adventurous travels with the exploration team making their way on the Missouri River during the early 1800's, may unfortunately be nothing but a trivial bit of history to some people.

But not to Wayne residents Dan Johnson and his son, Randy.

Johnson, an American History teacher at the Wayne Middle School, is about a quarter of the way completed in fulfilling his longtime goal — to travel the same route which explorers Meriwether Lewis and William Clark had taken in their expedition.

This summer Johnson and his son began retracing history — following the Missouri River path taken by the expedition crew. They got a glimpse of trials and tribulations which the early explorers faced. They inhaled the history presented at the many stopping points along the route.

"When I was a young kid growing up in Vermillion, a lot of time was spent talking about the Lewis and Clark expedition. As I began teaching, I always thought it would be fun retracing their route," said Johnson. "It worked out this year that I had time to do this. This past winter I read all I could about Lewis and Clark."

RETRACING, in this instance, did not call for the re-enactment of the Lewis and Clark expedition.

Lewis and Clark traveled on a keel boat named Discovery. The Johnsons journeyed the Missouri River on a pleasure boat.

Nearly 184 years ago, the early explorers began their journey at St. Charles, Missouri and moved "upstream" beyond St. Louis into the state of Montana and westward. St. Louis was the starting point this summer for the Johnsons as they headed "downstream" to the mouth of the Missouri near St. Louis.

Lewis and Clark covered the territory between St. Charles and St. Louis (approximately 725 miles) in three months and six days. It took only seven days, with the motorized pleasure boat, for the Johnsons to complete the 725 mile distance.

"I kept a diary and am in the process of writing it up, putting the information in draft form. I'm calling it 'Lewis and Clark In Reverse,'" said Johnson.

NEXT YEAR the Johnsons plan on finishing the remaining three quarters of the Lewis and Clark expedition on the Missouri River, beginning the final leg below Great Falls, Montana.

On this summer venture, the Johnsons came to know the nature, turns and twists of the Missouri River. They marvel even more about the accomplishments of Lewis

and Clark.

"The one thing that amazes me is that the Missouri River current now averages five to eight miles per hour. They (those in the Lewis and Clark expedition) were traveling in a keel boat that was 55 feet long and nine feet wide, filled with supplies and trade material to last a long time. Also, they were pulling two flat bottom boats about 30 feet long. They were going upstream against the current — and there were no dams back then," said Johnson.

"We were traveling downstream, from Sioux City to the mouth of the Missouri, where there were dams, dikes and deep channels, places where before there were snags and sandbars," he added.

HE SAID THE keel boat was equipped with a mast so that the sails could capture prevailing winds. "It also had 24 oars on it and there were times when they would throw the rope out and drag it," he mentioned.

Johnson related how the insects were a problem while he and his son navigated the Missouri River. "We would run into areas where there were lots of gnats. Sometimes the attack was so bad that we had to go into the river to get away," Johnson said.

The Lewis and Clark expedition also faced the same insect dilemma. "It got so bad that they could hardly stand it," he said. One solution the expedition attempted was to rub bear grease over their body as protection from mosquitos.

ONE THING IS for certain. River traffic was few and far between for the 1800's expedition.

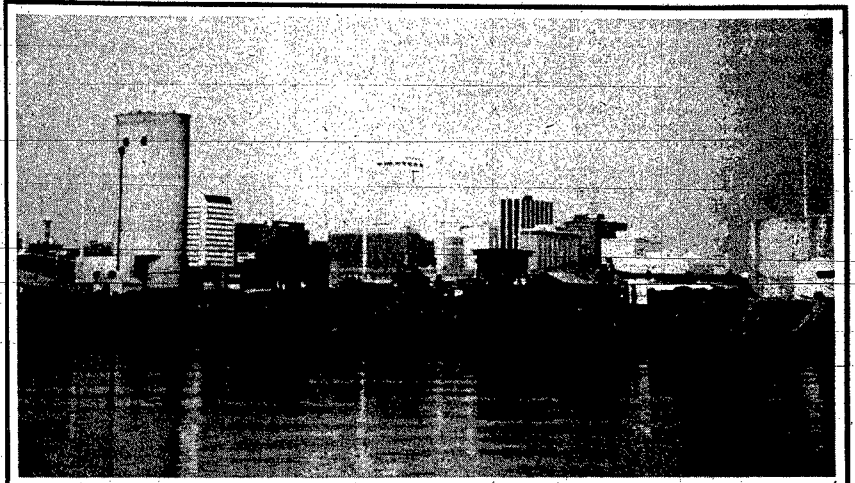
Between Sioux City and Omaha-Council Bluffs, the Johnsons saw their fill of pleasure boats. However, from Omaha to the mouth of the Missouri River, pleasure boats were non-existent.

The Johnsons also witnessed how major cities and industries rely on the Missouri River for many reasons — irrigation, barge transportation, energy production, manufacturing, recreation.

American history was evident throughout the trip, particularly at the mapped-out campsites. Near Council Bluffs was a site where the first major treaty with Indians in the area were made. The same place was labeled a good settlement location. This is where Fort Atkinson, the largest military post in the United States in the 1820's, was built.

Then the Johnsons camped at Independence Creek, a small creek where the 1804 expedition had fired a cannon to symbolize the July 4th celebration. "Randy symbolically shot off bottle rockets at the site," said Johnson.

Near Jefferson, Missouri, where the Discovery broke its mast, Mast Creek was named. "One camp that they settled in sounded like a nightingale, so they named it Nightingale Creek," Johnson men-



A VIEW of Omaha is seen from the Missouri River. The Woodman building is in the background.

## History

The Lewis and Clark Expedition was the first overland American expedition to the NW Pacific coast under the command of Meriwether Lewis and William Clark, with Sacagawea, the Indian wife of an expedition member, acting as interpreter and guide.

Setting out from near St. Louis in May, 1804, the expedition pushed westwards through the Rockies, reaching the Pacific Ocean at the mouth of the Columbia River in November, 1805. They returned to St. Louis in September, 1806.

The expedition was dispatched by President Thomas Jefferson to explore the newly-purchased Louisiana Territory which expanded America's borders to the Continental Divide. It caught the popular imagination and played a major part in establishing the view that it was the "Manifest Destiny" of the U.S. to expand to the Pacific Ocean.

Honed. There are some things that the Johnsons will always remember while covering the Lewis and Clark route. "I remember when we came around a bend near Kansas City. It looked like the buildings were growing right out of the river," said Johnson.

"We encountered one really bad storm. If the pump had not been

See EXPEDITION, page 5



ABOVE IS a replica of the Discovery — a boat used in the Lewis and Clark expedition.

# Questions on future of education remain

By Chuck Hackenmiller  
Managing Editor

Lots of questions are ahead for Nebraska's education system, according to the state's Commissioner of Education Joe Lutjeharms, as he addressed a workshop in Wayne on Friday morning.

Lutjeharms was a guest speaker during a workshop scheduled at the Educational Service Unit One's Pre-opening Information Day that took place at the Wayne-Carroll public schools. The event was attended by teachers and administrators from Wayne-Carroll and the surrounding area.

The state education department's primary purpose, Lutjeharms said, is "service."

"The component which is the most important in the department is leadership," he said.

HIS TOPIC WAS "What's right with Nebraska education, what's



LUTJEHARMS addresses the issues at the ESU workshop.

wrong with Nebraska education, what changes are we likely to experience in the immediate future?"

Lutjeharms asked the teachers and administrators attending his workshop to provide input on specific topics he addressed as unique situations about Nebraska.

The first subject he mentioned was the property tax issue.

"Nearly one billion dollars will be spent this year on the K-12 education system in this state. About \$220 million of that will be funded through state sources. The rest is from local property taxes," said Lutjeharms.

"Nebraska is ranked 48th [out of 50 states] in providing state aid to schools," he said.

The range in property taxes is from 40 cents per \$100 valuation to \$3 per \$100 valuation. "So we have a tremendous range out there," Lutjeharms said.

ANOTHER "loud outcry from the legislature" is that state isn't collect-

ing the necessary data showing the accountability of the education which students are getting within the school districts.

Reporting test scores of students on a statewide basis has been discussed.

Other questions of the future include what will become of the state's six classes of school districts. There are 900 school districts in Nebraska, while surrounding states Wyoming, Colorado and Iowa have considerably less.

Another issue, Lutjeharm said, will be on how the state commissioner of education should be selected. Should he or she be appointed by the state board of education, as is the case now, or should the state elect a state superintendent by ballot? Or should someone from the governor's office be the one to appoint the commissioner?

LUTJEHARM SAID Nebraska ranks 42nd out of 50 when it comes to

salaries of teachers in the state. The state ranks 24th in personal income.

There are at least 15 teachers training programs in Nebraska. "You all know how many teachers that we have in this state," he said.

School accreditation will also be issues of the future. "If every student is to have a certain level of education, why three accreditations?" Lutjeharms put before those attending the workshop.

He talked about Chapter 13 — the law relating to teaching children at home or not in an accredited facility. "There are 1,300 children in that kind of setting today," Lutjeharms said.

Another proposal before the legislature is an act that would allow families to take their children and money and go to another school other than in their district if they feel the other school would be more advantageous to the student. "That has a lot of ramifications to it," said Lutjeharms.

# Gas company releases results of study

By Chuck Hackenmiller  
Managing Editor

A recent study, partially commissioned by Peoples Natural Gas, reveals that municipal takeover of private natural gas systems would reduce property tax income and could result in inequitable and regressive tax treatment.

The study was performed by the Nebraska Tax Research Council, Inc. Peoples is one of the members of the Nebraska Blue Flame Associa-

tion which commissioned the study by the Tax Research Council.

The study, "Analysis of the Propriety of Financing Municipal Government Through Natural Gas Revenues," considers the tax and other fiscal implications should municipal governments take over operation of privately owned natural gas distribution systems.

A PRIMARY concern identified in the study is that the use of any surplus revenue from the operation

of a natural gas distribution business to finance community services would result in inequitable and regressive taxation. "Citizens and businesses which use natural gas would share a greater burden in financing city services than non-users, the study revealed.

"We have a concern that municipal takeover being considered in some communities would adversely affect our natural gas customers in many ways, including the taxes they pay," said Jim Markham, manager for

Peoples Natural Gas in Wayne.

"The [Nebraska Tax Research] Council is a knowledgeable, unbiased third party which we felt could objectively research the tax implications of municipal takeover," he mentioned.

Schools receive approximately 50-65 percent of the total property taxes collected by privately owned gas distribution systems and would be especially affected by the loss of that revenue. In Wayne, over \$6,000 of the property tax paid by Peoples

goes to the schools.

THE STUDY says there is no guarantee there would be any "surplus income" realized by a municipal acquisition of a gas distribution system and if there are any, that there is a guarantee it would be passed on to the consumer.

More of the study points out concerns that municipalities would become dependent on gas utility. See GAS STUDY, page 5

**In Wayne**

**'Grocery Cart Smart' food tours planned by Heart Association**

The Wayne County division of the American Heart Association, Nebraska affiliate, has scheduled four one-hour "Grocery Cart Smart" food tours in Wayne during September.

A spokesman for the Wayne County division said the food tours are part of the Association's "Food Festival" — a national nutrition education event designed to improve public awareness of the relationship between coronary heart disease and diets high in cholesterol and saturated fat.

Diane Gentrup, Wayne County division Food Festival chairman, said the purpose behind the food tours is to provide nutrition information to the public through the grocery store in a positive, upbeat manner.

In Wayne, tours are scheduled at Bill's GW on Monday, Sept. 12 and Thursday, Sept. 15 at 7 p.m. both days; and at Pac 'N' Save on Wednesday, Sept. 14 and Saturday, Sept. 17 at 2 p.m. each day.

Local American Heart Association volunteers will show tour participants how to choose good tasting heart healthy foods from each section of the store.

Gentrup stressed that pre-registration for the tours is required. Persons interested in the "Grocery Cart Smart" tours should sign-up between Aug. 29 and Sept. 9 at the store they wish to tour.

Gentrup added that the number in each tour group is limited and interested persons are encouraged to sign-up early to assure a convenient time slot.

**Speaking of People**

**St. Paul's churchwomen meet**

St. Paul's Women of the Evangelical Lutheran Church in America (WELCA) met Aug. 24 at 7:30 p.m. with 23 members present.

President Opal Harder welcomed the group. A thank you was read from Gladys Peterson, along with a list of new shut-ins.

Committee, Altar Guild, circle and service group reports were given. Joye Magnuson, Helen Weible and Ida Myers were appointed to serve on the nominating committee.

Marilyn Carhart reported 26 school kits are nearly complete for Lutheran World Relief.

Plans were made for members to attend convention on Sept. 9-10 in Lincoln.

President Harder closed the meeting with a thought for the day and prayer.

LESLIE HAUSMANN opened the program with a reading, "Goofy Two Shoes," and Bible readings. Members of Evening Circle presented a fashion show, entitled "Evening of Enchantment." Hausmann closed the program with a solo.

Next meeting will be Sept. 28 at 2 p.m. with election of officers. Esther Circle will be in charge of the program, and Ruth Fleer and Pauline Dall will serve as hostesses.

ESTHER CIRCLE of St. Paul's Lutheran Church did not meet during August. The group will meet Sept. 16 at Wayne Care Centre with Leone Jager in charge of the lesson and Joye Magnuson as hostess.

Naomi Circle also did not meet during August. Next meeting will be

Sept. 15 at the church. Ida Myers will be in charge of the lesson.

Evening Circle did not meet during the summer. Meetings will resume on Sept. 28 with Evelyn Schöck and Leslie Hausmann as co-hostesses. Arlene Ostendorf will be in charge of devotions.

Altar Guild met Aug. 4 with Ardycy Reeg as hostess and everyone joining in devotions. Mary Martinson will host the Sept. 1 meeting, and Ruth Fleer will be in charge of devotions. The group plans to tour Dana College on Oct. 6.

Sewing Group met Aug. 11 and tied 10 lap robes and one quilt for Lutheran World Relief. They will meet again Sept. 8 at 9:30 a.m. at the church. A potluck luncheon will be held at noon.

**Engagements**



**Scheel-Brown**

Making plans for a Sept. 9 wedding at the First United Methodist Church in Norfolk are Beth Scheel and Tony Brown, both of Norfolk.

Their engagement and approaching marriage have been announced by their parents, Kenneth and Julie Scheel of Montgomery, N. Y., Linda Brown of Wayne and William Brown of Algona, Iowa.

The bride-elect is a graduate of Norfolk High School and will pursue a degree in psychology and education. She is presently employed at the Alco Store in Norfolk.

Her fiancé was graduated from Algona, Iowa High School and attended Northern Iowa Area Community College at Mason City. He is employed as city manager, Central States Theater Corporation, in Norfolk.

**Families meet in Wayne, Norfolk**

**Hamm-Wooden reunion**

Fifty-eight persons attended the annual Hamm-Wooden family reunion on Aug. 21 at the East Park in Wayne.

Towns represented were Pardeeville, Wisc.; Randolph, Winside, Omaha, Wayne, Norfolk, Wausa, Bloomfield, Neligh, Pender, Emerson, Cairo, Carroll and Elkhorn.

The oldest male family member present was George Johnston of Winside, and the oldest female family member was Mrs. Hilda Hamm of Norfolk. The youngest male was Michael Lindsay of Wayne, and the youngest female was Kindra Hinz of Elkhorn. Traveling the furthest distance were Mr. and Mrs. Lloyd Sams of Wisconsin.

Helen Hancock was in charge of this year's reunion and will also make plans for the 1989 reunion scheduled the third Sunday in August at the same location.

**Hinrichs reunion**

A Hinrichs family reunion was held Aug. 21 at a Norfolk park. Approximately 40 relatives attended from San Antonio, Texas; Omaha, Columbus, Humphrey, Hadar, Norfolk, Laurel and Carroll.

**Senior Citizens Congregate Meal Menu**

Monday, Aug. 29: Roast pork and gravy, whipped potatoes, French cut green beans, sauerkraut salad, whole wheat bread, tapioca pudding.

Tuesday, Aug. 30: Baked ham, baked potato, squash, kidney bean salad, rye bread, mandarin oranges.

Wednesday, Aug. 31: Chicken fillet, scalloped potatoes, stewed tomatoes, frosted raspberry salad, fruit slush.

Thursday, Sept. 1: Barbecued meat balls, French baked potato, mixed vegetables, lettuce and carrot salad, quick bread, fresh fruit.

Friday, Sept. 2: Tuna and noodles, peas, deviled egg, mixed fruit salad, ho-ho cake.

Coffee, tea or milk served with meals

**Greve-Lunz**

Lisa Ann Greve and James August Lunz, both of Wakefield, have announced their plans for a Nov. 5 wedding at Salem Lutheran Church in Wakefield.

The bride-elect is the daughter of Art and Mae Greve of Wakefield and is self-employed as a computer programmer.

Her fiancé, son of Betty and LeRoy Lunz of Wakefield, is engaged in farming.

(Editors note: The Scheel-Brown and Greve-Lunz engagement photos were inadvertently switched in the Thursday, Aug. 25 edition of The Wayne Herald. We apologize for the error).



**50 years together**

MR. AND MRS. LEROY COOPER of Wakefield will celebrate their golden wedding anniversary with an open house reception on Saturday, Sept. 3 from 2 to 4 p.m. at St. John's Lutheran Church, Wakefield. The event will be hosted by their children and families, Dorothy and Don Hankins of Rosalie, LeRoy and Jean Cooper of Gering, Violet and Bob Schott of Gordon, Mary and Larry Baker and George and Susan Cooper, all of Wakefield, and Norman and Mary (Susie) Cooper of Gering. All friends and relatives are invited, and the honorees request no gifts.

**News and Notes**

by Mary Temme, Extension Agent-Home Ec.



**Tracking cash flow for better money management**

Cash flow planning isn't just for businesses anymore. Individuals and families can use the technique to help manage their money.

Cash flow budgeting is a plan that takes into account not only amounts of income and expenses, but also the timing of income and expenses.

To make a cash flow plan, gather all the records of income and expenses for the past 12 months. Then schedule a time when everyone in the household can spend a few hours putting the plan together. It's important that everyone be involved since this increases the chances that the plan will be successful.

FIRST, EXAMINE all the sources of income. What are the amounts of expected income and when are they anticipated? If more than one source of income is expected, set planning periods according to the dates of the most frequently received income.

For example, if one source of income is monthly and the second source is every two weeks, set cash flow planning periods for every two weeks.

Next, you should look at three different types of expenses. The first type are fixed expenses, or those that you must pay because of a contract or law. Second, consider other regularly occurring flexible amount expenses such as food, utilities, transportation and entertainment. Lastly, consider irregular expenses such as insurance premiums, clothing, charities, tuition, vacation and gifts.

List each expense during the planning period in which it is expected. Some expenses such as food and transportation will be part of each planning period. Others may not.

Use records of expenses like pay statements, bankbooks, bills, receipts and checking account records to estimate as accurately as possible both the amount and timing of each expense.

CALCULATE the bottom line for each time period. If you have more income than expenses, be sure you have allowed for all expenses as well as for saving.

If your expenses are more than your income, you basically have two options — find more income or cut expenses. A temporary job or selling some unneeded assets will yield additional income.

After the cash flow plan is completed, don't just file it away. Put it someplace where everyone can see it, such as the refrigerator door or a bulletin board. The biggest advantage to cash flow planning is that as you work with it, you may be able to spot potential trouble before it happens.

To help you complete your household cash flow ask for the publication "Cash Flow Planning Form for Household Living Expenses, HEG-85-202," at your Cooperative Extension Service office. The publication is available free of charge.

**Community Calendar**

**MONDAY, AUGUST 29**

Wayne Area Chamber of Commerce business after hours (welcoming back Wayne State College faculty members), Black Knight, 5 to 7 p.m.

Alcoholics Anonymous, Wayne State College Prairie Room, 8 p.m.

**TUESDAY, AUGUST 30**

Sunrise Toastmasters Club, City Hall, 6:30 a.m.

Villa Wayne Tenants Club weekly meeting, 2 p.m.

Tops 782, St. Paul's Lutheran Church, 6 p.m.

**Briefly Speaking**

**Asmus marks 87th year**

John Asmus, rural Winside, celebrated his 87th birthday on Aug. 20 at his home. Guests included Mr. and Mrs. Dave Miller, Mr. and Mrs. Gofthilf Jaeger, Mr. and Mrs. Albert Jaeger and Herman Jaeger, all of Winside; Mr. and Mrs. Leo Asmus of Dixon, Mo.; Marilyn Capps of Lakewood, Colo.; Lorna Plymnesser and Jon of Omaha; Kenneth Asmus, Angelia and Ben Thies, all of Norfolk; and Mrs. Steve Schultz and sons of Madison.

A German sing-a-long was held by the Jaeger brothers, and a birthday cake was furnished by Lorna Plymnesser.

Evening guests included Mr. and Mrs. Lyle Thies, Mrs. Katherine Malchow and Mrs. Hattie Galina, all of Norfolk. Mr. and Mrs. Marvin Asmus of Beemer were guests on Sunday.

**Hospital auxiliary groups meeting**

The Evening Group of the Wayne Hospital Auxiliary will hold its first meeting of the new season on Thursday, Sept. 1 from 7 to 8 p.m. in the Wayne Woman's Club room.

Discussion will include the annual style show slated Oct. 4 and the annual fall bazaar scheduled Nov. 5.

A spokesman for the Hospital Auxiliary said the Evening Group was organized earlier this year for women of all ages who are unable to meet during the day. All interested women are invited and encouraged to attend the Sept. 1 meeting.

The afternoon group will hold its first meeting on Sept. 16 at 2 p.m. at Providence Medical Center.

**Seeking young career women**

The Wayne chapter of the Business and Professional Women's Club is again seeking women to participate in the Young Career Women program. The program is designed to honor successful young women in the community.

To be eligible, women must be between the ages of 21 and 35 and must be employed in business or in the professional field for at least one year. The individual also should be involved in community service.

Persons interested in the program, or wishing additional information, are asked to contact Jane Ahmann, 375-3163.

**Sunrise Toastmasters**

Sunrise Toastmasters Club held its monthly variety meeting on Aug. 23. Each member spoke briefly on his or her background. Club membership was discussed.

President Marion Arneson called the meeting to order with six members present. Invocator was Duane Havrd, toastmaster was Sara Campbell and jokemaster was Doug Temme.

**School Lunches**

**ALLEN**

(Week of Aug. 29-Sept. 2)

Monday: Tacos, lettuce and cheese, buttered corn, grapes, peanut butter cookie.

Tuesday: Chicken fried steak, mashed potatoes and gravy, carrot and celery sticks, bread and butter, apple crisp.

Wednesday: Hot dogs (with the works), French fries, rolls and butter, fruited gelatin.

Thursday: Chicken nuggets, honey (optional), baked beans, wheat roll and butter, half-apple.

Friday: Fiestados, tossed salad with French or Thousand, half banana, cinnamon crispie cookie.

Milk served with each meal

Wednesday: Pizza, coleslaw, carrot stick, gelatin cake.

Thursday: Pigs in a blanket, pickle spears, baked beans, cake, pears.

Friday: Taco boat, lettuce and cheese, French fries, applesauce, cake.

Milk served with each meal

**WAYNE-CARROLL**

(Week of Aug. 29-Sept. 2)

Monday: Beef pattie with bun, pickle slices, corn, peaches, cookie.

Tuesday: Chicken pattie with bun, lettuce and mayonnaise, tater rounds, grape juice, cookie.

Wednesday: Hot dog with bun, baked beans, celery sticks, pears, cookie.

Thursday: Steak nuggets, barbecue sauce, dinner roll, mashed potatoes with butter, applesauce, cake.

Friday: Pizza, lettuce salad with choice of dressing, fruit cocktail, chocolate chip bar.

Available daily: Chef's salad, roll or crackers, fruit or juice, and dessert.

Milk served with each meal

**WINSIDE**

(Week of Aug. 29-Sept. 2)

Monday: Pizza, casserole, French bread, tossed salad.

Tuesday: Chicken nuggets, peaches, rolls and butter, chocolate cake.

Wednesday: Tuna salad pita, lettuce, tomato, pears.

Thursday: Grilled cheese sandwich, pork and beans, strawberry shortcake.

Friday: Hamburger, tater tots, onion, pickles, frosted graham's.

Milk served with each meal

**WAKEFIELD**

(Week of Aug. 29-Sept. 2)

Monday: Cheeseburger sandwich, pickle, corn, peaches, chocolate chip bar.

Tuesday: Grilled cheese, green beans, tomato slice, watermelon, cookie.

# Pizza Hut: Tempting area pizza lovers for over 14 years

From the original Thin 'n Crispy® to Pan Pizza and the newest Hand-Tossed Traditional® pizza, Wayne's Pizza Hut has been tempting its customers with mouthwatering pizzas, sandwiches and pasta dishes since opening here in 1974.

"Our Pan Pizza has been extremely popular," says manager Lynn Trevett, adding that Pizza Hut's five-minute Personal Pan pizza guaranteed during the lunch hour has revolutionized the pizza industry and made it possible for people to consider eating pizza for lunch. If their pizza isn't ready in five minutes, the next one is free.

The new Hand-Tossed Traditional® pizza, explains Trevett, features a crust that's not too thick and not too thin. The pizza also features a zestier sauce and a blend of three different cheeses.

"The Hand-Tossed Traditional® pizza offers pizza-lovers another choice," says Trevett, adding that it too has become extremely popular with customers.

In addition to a variety of pizza, Pizza Hut also features a fresh salad bar, sandwiches, spaghetti and cavatini.

**TREVETT IS QUICK** to point out that almost all of the pizza ingredients, including the sauce, are prepared fresh daily. "Vegetables are chopped by hand," says Trevett, "and the pizza dough is prepared three times daily to ensure freshness."

Pizza Hut also has the most advanced equipment, including a state-of-the-art beverage system and an air-impinged conveyorized oven with a forced air system that cooks pizza three times faster than the standard pizza oven.

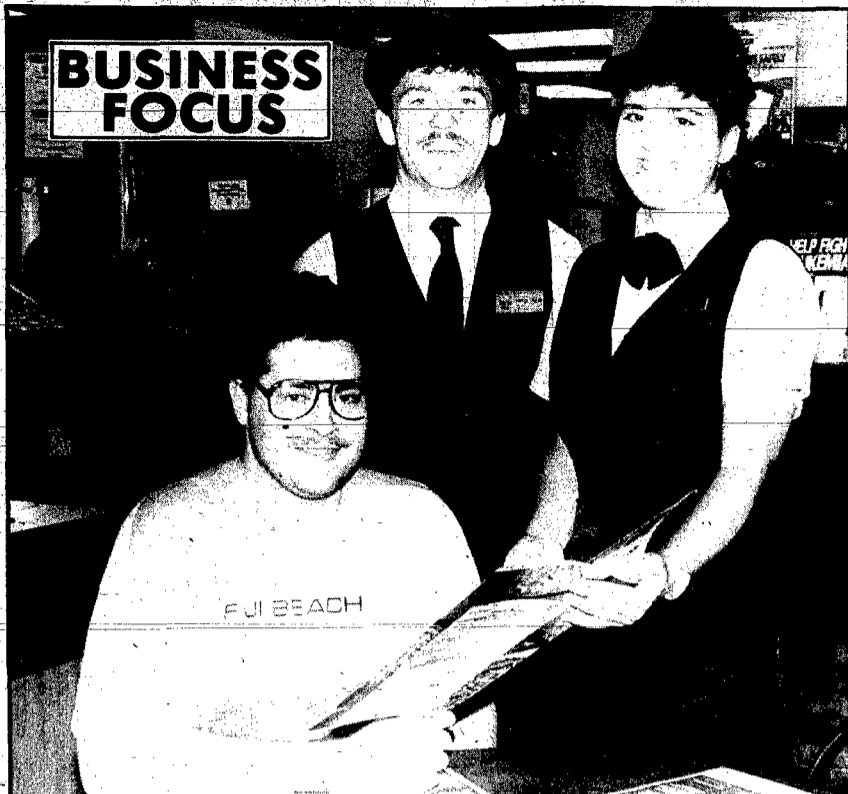
And because customer satisfaction is at the top of the list of Pizza Hut goals, Trevett said all employees go through an extensive training program that includes eight to 12 hours of training before they ever step onto the floor and begin working.

Managers and assistant managers also are required to attend a two-week training school.

**IN ADDITION TO** satisfying its customers' pizza cravings, Trevett said Pizza Hut also strives to be a good corporate citizen and is always interested in assisting various organizations and institutions, including the high school and college, with fundraising events.

Pizza Hut worked with Wayne-Carroll High School students one year in organizing a bumper sticker promotion to raise money for the junior-senior prom. School students sold 500 bumper stickers which featured coupons on back for pizza discounts.

"We're always looking for things to



**ASSISTANT MANAGERS** at Wayne's Pizza Hut, shown with a customer, are Burton Griess and Shelly Niichel.

do for the community," stresses Trevett.

**PIZZA HUT'S** commitment to become involved in the community is most evident in the tremendous success of its Book-It program which involves area school students in grades one through five.

The nationwide reading program, now in its third year, encourages youngsters to read by offering them free pizzas. Youngsters also are presented badges and awarded stars for each month they earn a free pizza. The awards are presented by individual class teachers.

At the end of the five-month program, if all of the children in the class have met their goal four out of five months, the entire class is treated to a pizza party.

"It makes the kids feel like they've really accomplished something,"

says Trevett. "And they have. Our job is to provide them with the encouragement and incentive to read and to keep reading throughout their lives."

Area schools which have chosen to participate in this year's Book-It program include Allen Consolidated, Emerson Public and Sacred Heart, Laurel-Concord Elementary, Victory Academy in Laurel, Pilger Elementary, Wakefield Elementary, Wisner Elementary, St. Mary's in Wayne and Wayne Public Schools, as well as all Wayne County rural schools.

Trevett said that as many as 50 to 60 youngsters have redeemed their free Book-It pizza coupons in one night.

**WHEN IT COMES** to catering to its customers' needs, Pizza Hut offers free delivery service each day from 5 p.m. to closing.

There also is a Care Bear Birthday Club with about 1,200 youngsters registered. The birthday child is provided a free birthday-size pizza and soft drink, while other youngsters in the party receive a fun pack including crayons, a coloring book, etc.

There also is a Care Bear book nook featuring a mini-library in which youngsters can browse while waiting for their pizza.

**TREVETT HAS** been employed by Wayne's Pizza Hut for 11 years and has served as manager for the past three years. Prior to that, he was assistant manager for three years.

Pizza Hut employees approximately 25 persons, including two assistant managers, Burton Griess and Shelly Niichel, and five shift supervisors.

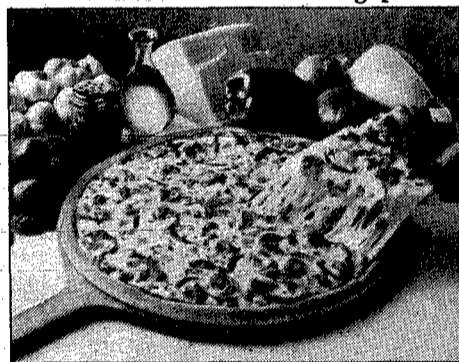


**LYNN TREVETT HAS BEEN** employed at Wayne's Pizza Hut for the past 11 years and has served as manager the past three years.



**PIZZA DOUGH IS** prepared three times daily at Pizza Hut to ensure freshness. Pictured preparing a fresh batch of dough are Lynda Johnson and Nancy Johnson.

We've topped our new Supreme Hand-Tossed Traditional Pizza with something special.



**NO COUPON NEEDED**  
A Special Price — Just \$9.99  
Get a Large Supreme Hand-Tossed Traditional Pizza for \$9.99

Our new large Supreme Hand-Tossed Traditional pizza is made with a crust that's not too thick, not too thin. Then we smother it with our special blend of three cheeses and six mouthwatering toppings.

**DINE-IN/CARRY OUT OR FAST, FREE DELIVERY**  
Check your local yellow pages for the Pizza Hut nearest you. 901 E. 7th — Wayne — 375-2540

**25% OFF WINTER COATS**

quality outerwear by **Weather Tamer®**



**FREE 60 DAY LAYAWAY**

**kid's closet**

215 MAIN WAYNE, NE

STORE HOURS  
Mon.-Fri. 9:30-5:30  
Thursday 9:30-3:00  
Saturday 9:30-3:00

**Carhart LUMBER CO.**

**FARM AND HOME CENTER FOR NORTHEAST NEBRASKA**

**BUILDING A REPUTATION FOR QUALITY, VALUE AND SERVICE SINCE 1921**

**LET US HELP YOU MAKE THE GOOD LIFE EVEN BETTER!**

**HWI**  
The Frandy One



105 MAIN ST. WAYNE, NE 375-2110

**TRY SOME OF THESE GREAT BUYS**  
Prices Good August 27-30, 1988

JALAPENO Hush Puppies 85¢ Lb.	81% LEAN GROUND BEEF \$1.39 Lb.
PETITE CINNAMON ROLLS 89¢ Dozen	Whole Fresh Frozen CATFISH \$2.09 Lb.
	Battered COD PORTIONS 1.5 Oz. Size \$1.99 Lb.

**Check Out Our In-Store Specials**  
Custom Slaughter - Processing - Curing - Rendering - Sausage - Beef Quarters - Sides - Loins - 1/2 Hogs - Pork Loins

**JOHNSON'S FROZEN FOODS**  
116 WEST 3RD WAYNE 375-1100

Now you can create the forms you need to gather just the information you want. Forms with lines, columns, boxes, even artwork and other visual aids. All to simplify the process — for those filling out the forms... and for those analyzing the results. It's made possible — and easy, too — by a Desktop Publishing System from Apple® computer.

That's because an Apple Desktop Publishing System has a Macintosh at its core — the powerful, yet easy-to-use business computer, with graphics capabilities already built in. Add software like FileMaker, MegaForm and FormDesigner, and you can customize virtually any format for compiling information.

Plus print out your work on the LaserWriter® Plus printer, and all your forms will be ready to use, as is.

Which means no additional typesetting, layout or printing fees.

So go ahead, get your data in great form. In fact, bring us the forms you're using now, and we'll show you just how easily — and cost-effectively — an Apple Desktop Publishing System can do the job.

**Get The Right Facts With The Right Form.**

**Wise CONNECTION**  
APPLE COMPUTERS AND IBM COMPATIBLES

613 MAIN STREET • BOX 328 WAYNE, NEBRASKA 68787 (402) 375-1107

1909 VICKI LANE • SUITE 103 NORFOLK, NEBRASKA 68701 (402) 375-2692

**Hardee's®**  
We're Out To Win You Over™  
602 Main Street — Wayne

**HARDEE'S COUPON**  
**REGULAR ROAST BEEF**  
**HARDEE'S COUPON**

**\$1.19**

Coupon expires September 3

**HARDEE'S COUPON**  
**HARDEE'S COUPON**  
Hardee's Food Systems Inc. 1988

# Sports

## Nebraska Game & Parks

The Game and Parks Commission's "Old Town" display at the 1988 Nebraska State Fair is looking better than ever and visitors are encouraged to stop by the Hunter Safety Shooting Building to learn about the Commission's new Hunter Identification Card Program, and obtain a free card.

The Hunter Identification Card Program is aimed at promoting positive hunter-landowner relations. By presenting his identification card when asking permission to hunt on private land, the hunter gives the landowner information about himself and demonstrates he is a responsible hunter.

The card lists the hunter's name, address, phone and vehicle license number. It also carries the pledge, "I am responsible for my actions during my outdoor pursuits, and will conduct myself in an ethical manner while a guest on your property."

The free cards are being made available to hunters by the Game and Parks Commission.

Smoke cooking and barbecuing will be demonstrated in the Gazebo area and NEBRASKA Land Magazine cooks will be on hand to answer questions about outdoor cooking. The new NEBRASKA Land Country Cookbook will be available at the Gazebo for those who have not yet purchased a copy.

There will be the popular apple cider pressing demonstrations on the weekends and the Labor Day holiday by Arbor Lodge State Historical Park Superintendent Randy Fox and his staff.

All fairgoers are sure to stop at the Fisheries Division's popular 23-tank aquarium building and the huge outdoor viewing tank where nearly 50 species of Nebraska fishes will again be on display.

There will be huge turtles, monster catfish, and lots of other large fish that will make the fisherman's heart beat a little faster.

Landowners are encouraged to stop by the Resource Services Division's display which shows living examples of good and bad habitat. Representatives will be on hand to suggest plantings for land enrolled in the Conservation Reserve Program.

They will also explain and discuss the importance of quality habitat in wildlife management and survival.

Hunters and trappers will want to stop by the Wildlife Division's Trapper's Cabin and get the latest information of the waterfowl situation this year and discuss the up-coming 1988 trapping seasons.

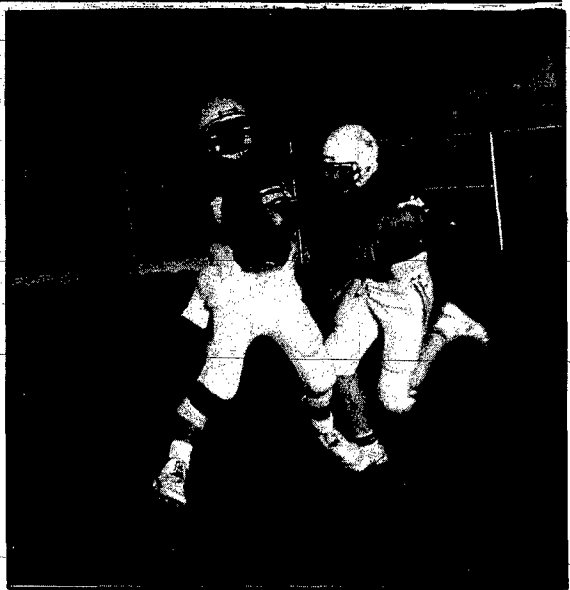
Parks Division employees are anxious to suggest some ways park visitors can extend their outdoor enjoyment by visiting Nebraska park areas in the fall when trees and other plants are their most colorful.

Visitors are encouraged to stop by the Parks Division booth and discover the interesting and exciting park activities available in the fall.

Things will be popping again in the Hunter Safety Shooting Center where kids and adults can try their skill at firing .22 rifles after successfully completing a hunter safety test.

The State Fair is a good place to renew your NEBRASKA Land magazine subscription and pick up your new 1988 NEBRASKA Land Calendar of Color when you subscribe.

This year's calendar features several beautiful full-color photographs of animals, birds, flowers, outdoor recreation, and Fort Robinson State Park.



**JUST IN THE nick of time.** Senior quarterback Jess Zeiss unleashes a pass just briefly before being punished by a defensive end in soap scrimmage action Friday night.



**4TH JUG CAPTURED** the women's softball league tournament by defeating Merchant's, 14-13, on Thursday night. Team members include: Back L-R; Trevis Beeck, coach; Kelly Heithold, Nannette Schulz, Kelly Zierke, Shannon Carroll, Heidi Schopke, Laura Stuerman and Nori Kirk. Front row L-R; Lynell Fahrenholz, Monica Carroll, Gwen Jorgensen, Janet Ehlers, Deb Allemann, Shelly Carroll. At left is Monica Carroll scores the winning run with two out in the seventh inning. Team members not pictured include Sarah Lebsock, Lisa Jacobsen, Deann Schutte and Des Salmon.



**PLACING THIRD** in the Osmond Co-ed softball tournament last weekend was the Varsity Lounge of Wayne. Team members include: Back row L-R; Jeff Di6n, Rod Cook, Trevis Beeck, Tyler Frevert, Danny Frevert, and Jim (No last name given). Front row L-R; Lori Fleer, Laura Stuerman, Monica Carroll, Sara Lebsock, Lisa Jacobsen, Kelly Zierke, Doug Carroll. Not pictured is Shannon Carroll, Brian Eddie, LaMont Christensen and Jere Morris.

## Sports Briefs

### Field Rep in Pender

Meet a Women's International Bowling Congress (WIBC) field representative. Marlene Patterson, one of five representatives throughout the country, will visit Pender, Neb. on Monday, August 29, as guest of the Pender Women's Bowling Association for its 7:30 p.m. forum meeting at Pender Lanes.

Questions dealing with league procedures and policies will be answered during this local association's forum meeting. The WIBC Championship Tournament will also be discussed. Included on the agenda will be information concerning the senior programs, Young American Bowling Alliance activities, National Bowling Council promotion plans and new WIBC plans and projects.

Patterson will also explain the many services available through WIBC for its 3.2 million members. Her presentation may include either a slide presentation or one of WIBC's many films.

The meeting is open to all members of the women's bowling association and the officers of the local junior bowling association.

### Second Guesser Kick off

The Wayne State Second-Guessers will hold their fall kick off on Thursday, Sept. 1 at the National Guard Armory in Wayne.

The 7 p.m. barbecue is open to anyone interested in becoming a member of the athletic booster club. Dr. Donald Mash, Wayne State President, is the featured speaker at the kick off.

The cost of the barbecue is \$10 and includes the meal, a membership in the Second Guessers and a Second Guessers hat. For more information on the kick off, contact Jean Berger at Wayne State, 375-2200, ext. 326.

### City rec sign up

City Recreation Director Hank Overin recently announced schedules for city-rec football and volleyball.

Rec football sign up and check out will be Wednesday, August 31 for third and fourth grade boys. Thursday, September 1, will be check out for fifth and sixth grade boys and Friday, September 2, will be check out for boys in grades third thru sixth who did not make it to their original check out dates.

All check out days will from 4-6 p.m. at the Wayne Middle Center, located above the fire hall.

Practices are slated for Mondays and Thursdays for fifth and sixth graders. Tuesday, Wednesday and Fridays are slated for the third and fourth graders. Tuesday nights are slated for inter-squad games which are tentatively scheduled to begin September 27, if teams are ready.

Overin reminds everyone that anyone in the Wayne city limits is eligible to participate free while those who live in rural areas and out of town are asked to pay the \$10 donation fee.

Adult Rec Volleyball for Women is slated to begin September 12 at the City Auditorium. Women who have less than three years volleyball experience are asked to attend the first session which runs from 7 p.m. to 8:15 p.m. Those having three or more years experience are asked to come at 8:15 p.m. to 10 p.m.

Meanwhile, September 14 is the scheduled day for Co-ed Volleyball to begin. All Co-ed players must have a partner. Once again the same principle applies. Those with less than three years volleyball experience are asked to come from 7-8:30 p.m., while those with more experience are asked to come from 8:30-10 p.m.

### Wrestling Club meeting

The Wayne Wrestling Club will have a meeting on Monday, August 29 at 7 p.m. in room 101 of the high school.

## League Tourney set

League tournament action for the Wayne "A" league teams will be held this Sunday at the Jaycees Softball Complex.

According to Don Sherman, president of the Wayne Softball Association, four teams will be represented in the tournament.

The tournament is set-up in a double elimination form with Wayne Sporting Goods taking on Tom's Body Shop in first round action and Sherman's taking on Pabst Blue Ribbon in the other first round game slated to begin at 1 p.m.

The losers of the first two games will play each other right away at 2 p.m. as well as the winners of the first two games. The finals are tentatively scheduled to begin at 4 p.m.

Following the tournament, both A and B league softball players are invited to attend a get together at the Windmill Lounge at 7:30 p.m. where the trophies will be awarded to both league winners.



## WAKEFIELD BOWL

IS TEMPORARILY PLANNING TO OPEN SEPTEMBER 12 DUE TO RENOVATION OF MACHINES, ALLEYS AND TELESCORES.

Openings Are Still Available For Men's, Women's & Mixed Leagues.

If interested, contact:  
Rita Gustafson at  
287-2527 or 287-2991.

# Management Positions For New Bingo Hall and Casino

Key management positions must be filled by Sept. 15 for a new 36,000 sq. ft. gaming facility presently under construction on the Omaha Tribe of Nebraska Reservation located on Hwy. 75 between Macy and Decatur. Excellent salary and benefits will be paid to individuals best qualified for the following positions:

- Food & Beverage Manager
- Pull Tab & Keno Manager
- Tour & Promotion Manager
- Casino Manager
- Bingo Manager
- Accounting Manager
- Personnel Manager

The new Bingo Hall and Casino offers you the opportunity and working environment for promotion and personal growth in a world class gaming facility. We are only interested in people who have demonstrated the skills to master the disciplines in their field and are now motivated to tackle the challenges available with an expanding national organization. Please send a complete summary of your education, employment experience, career goals and present salary to:

M.J. Sribniak  
4911 Capitol Avenue  
Omaha, NE 68132

All replies will be treated in strict confidence.

# golfing

## WAYNE COUNTRY CLUB

Women's Morning		Men's A Players	
C. Bohlin	46	K. Dahl	36
V. Pick	48	R. Simonsen	37
J. Holdorf	49	M. Summerfield	38
M. Nelson	49	B. Froehlich	39
L. Surber	49	K. Marra	39
Low B Scores		Men's B Players	
G. Munderloh	47	D. Hypse	40
J. Berres	51	J. Abrahamson	40
I. Hingst	51	M. Lessmann	40
Low C Scores		Men's C Players	
B. Barner	51	D. Fuetberth	44
L. Gilderleeve	57	S. Fredrickson	45
B. Collins	58	C. Flowers	45
Low D Scores		A-Johns	
E. Pinkelman	58	A. Johns	45
M. Larson	59	Couples League	
E. Willers	59	E. Luff	25
Top point winners		I. Powley	23
E. Luff	25	B. Collins	22
J. Sturm	42	B. Barner	22
V. Pick	42	D. Frink	21
J. Holdorf	46	G. Munderloh	21
N. Warremunde	47	Women's Evening	
T. Diediker	47	Low A Scores	
Low B Scores		J. Sturm	42
M. Sturm	49	V. Pick	42
I. Hingst	51	J. Holdorf	46
J. Poutre	54	N. Warremunde	47
J. Sorenson	54	T. Diediker	47
Low C Scores		Pros	
V. Vankey	53	D. Hypse	48
Low D Scores		L. Olson	48
M. Sturm	49	Men's A Players	
I. Hingst	51	K. Dahl	36
J. Poutre	54	R. Simonsen	37
J. Sorenson	54	M. Summerfield	38
Low E Scores		B. Froehlich	39
V. Vankey	53	K. Marra	39
Low F Scores		D. Hypse	40
V. Vankey	53	J. Abrahamson	40
Low G Scores		M. Lessmann	40
V. Vankey	53	B. Froehlich	39
Low H Scores		K. Marra	39
V. Vankey	53	D. Hypse	40
Low I Scores		J. Abrahamson	40
V. Vankey	53	M. Lessmann	40
Low J Scores		D. Fuetberth	44
V. Vankey	53	S. Fredrickson	45
Low K Scores		C. Flowers	45
V. Vankey	53	A. Johns	45
Low L Scores		Couples League	
V. Vankey	53	E. Luff	25
Low M Scores		I. Powley	23
V. Vankey	53	B. Collins	22
Low N Scores		B. Barner	22
V. Vankey	53	D. Frink	21
Low O Scores		G. Munderloh	21
V. Vankey	53	Women's Evening	
Low P Scores		Low A Scores	
V. Vankey	53	J. Sturm	42
Low Q Scores		V. Pick	42
V. Vankey	53	J. Holdorf	46
Low R Scores		N. Warremunde	47
V. Vankey	53	T. Diediker	47
Low S Scores		Pros	
V. Vankey	53	D. Hypse	48
Low T Scores		L. Olson	48
V. Vankey	53	Men's A Players	
Low U Scores		K. Dahl	36
V. Vankey	53	R. Simonsen	37
Low V Scores		M. Summerfield	38
V. Vankey	53	B. Froehlich	39
Low W Scores		K. Marra	39
V. Vankey	53	D. Hypse	40
Low X Scores		J. Abrahamson	40
V. Vankey	53	M. Lessmann	40
Low Y Scores		B. Froehlich	39
V. Vankey	53	K. Marra	39
Low Z Scores		D. Hypse	40
V. Vankey	53	J. Abrahamson	40
Low AA Scores		M. Lessmann	40
V. Vankey	53	B. Froehlich	39
Low AB Scores		K. Marra	39
V. Vankey	53	D. Hypse	40
Low AC Scores		J. Abrahamson	40
V. Vankey	53	M. Lessmann	40
Low AD Scores		D. Fuetberth	44
V. Vankey	53	S. Fredrickson	45
Low AE Scores		C. Flowers	45
V. Vankey	53	A. Johns	45
Low AF Scores		Couples League	
V. Vankey	53	E. Luff	25
Low AG Scores		I. Powley	23
V. Vankey	53	B. Collins	22
Low AH Scores		B. Barner	22
V. Vankey	53	D. Frink	21
Low AI Scores		G. Munderloh	21
V. Vankey	53	Women's Evening	
Low AJ Scores		Low A Scores	
V. Vankey	53	J. Sturm	42
Low AK Scores		V. Pick	42
V. Vankey	53	J. Holdorf	46
Low AL Scores		N. Warremunde	47
V. Vankey	53	T. Diediker	47
Low AM Scores		Pros	
V. Vankey	53	D. Hypse	48
Low AN Scores		L. Olson	48
V. Vankey	53	Men's A Players	
Low AO Scores		K. Dahl	36
V. Vankey	53	R. Simonsen	37
Low AP Scores		M. Summerfield	38
V. Vankey	53	B. Froehlich	39
Low AQ Scores		K. Marra	39
V. Vankey	53	D. Hypse	40
Low AR Scores		J. Abrahamson	40
V. Vankey	53	M. Lessmann	40
Low AS Scores		B. Froehlich	39
V. Vankey	53	K. Marra	39
Low AT Scores		D. Hypse	40
V. Vankey	53	J. Abrahamson	40
Low AU Scores		M. Lessmann	40
V. Vankey	53	D. Fuetberth	44
Low AV Scores		S. Fredrickson	45
V. Vankey	53	C. Flowers	45
Low AW Scores		A. Johns	45
V. Vankey	53	Couples League	
V. Vankey	53	E. Luff	25
Low AX Scores		I. Powley	23
V. Vankey	53	B. Collins	22
Low AY Scores		B. Barner	22
V. Vankey	53	D. Frink	21
Low AZ Scores		G. Munderloh	21
V. Vankey	53	Women's Evening	
Low BA Scores		Low A Scores	
V. Vankey	53	J. Sturm	42
Low BB Scores		V. Pick	42
V. Vankey	53	J. Holdorf	46
Low BC Scores		N. Warremunde	47
V. Vankey	53	T. Diediker	47
Low BD Scores		Pros	
V. Vankey	53	D. Hypse	48
Low BE Scores		L. Olson	48
V. Vankey	53	Men's A Players	
Low BF Scores		K. Dahl	36
V. Vankey	53	R. Simonsen	37
Low BG Scores		M. Summerfield	38
V. Vankey	53	B. Froehlich	39
Low BH Scores		K. Marra	39
V. Vankey	53	D. Hypse	40
Low BI Scores		J. Abrahamson	40
V. Vankey	53	M. Lessmann	40
Low BJ Scores		B. Froehlich	39
V. Vankey	53	K. Marra	39
Low BK Scores		D. Hypse	40
V. Vankey	53	J. Abrahamson	40
Low BL Scores		M. Lessmann	40
V. Vankey	53	D. Fuetberth	44
Low BM Scores		S. Fredrickson	45
V. Vankey	53	C. Flowers	45
Low BN Scores		A. Johns	45
V. Vankey	53	Couples League	
V. Vankey	53	E. Luff	25
Low BO Scores		I. Powley	23
V. Vankey	53	B. Collins	22
Low BP Scores		B. Barner	22
V. Vankey	53	D. Frink	21
Low BQ Scores		G. Munderloh	21
V. Vankey	53	Women's Evening	
Low BR Scores		Low A Scores	
V. Vankey	53	J. Sturm	42
Low BS Scores		V. Pick	42
V. Vankey	53	J. Holdorf	46
Low BT Scores		N. Warremunde	47
V. Vankey	53	T. Diediker	47
Low BU Scores		Pros	
V. Vankey	53	D. Hypse	48
Low BV Scores		L. Olson	48
V. Vankey	53	Men's A Players	
Low BV Scores		K. Dahl	36
V. Vankey	53	R. Simonsen	37
Low BV Scores		M. Summerfield	38
V. Vankey	53	B. Froehlich	39
Low BV Scores		K. Marra	39
V. Vankey	53	D. Hypse	40
Low BV Scores		J. Abrahamson	40
V. Vankey	53	M. Lessmann	40
Low BV Scores		B. Froehlich	39
V. Vankey	53	K. Marra	39
Low BV Scores		D. Hypse	40
V. Vankey	53	J. Abrahamson	40
Low BV Scores		M. Lessmann	40
V. Vankey	53	D. Fuetberth	44
Low BV Scores		S. Fredrickson	45
V. Vankey	53	C. Flowers	45
Low BV Scores		A. Johns	45
V. Vankey	53	Couples League	
V. Vankey	53	E. Luff	25
Low BV Scores		I. Powley	23
V. Vankey	53	B. Collins	22
Low BV Scores		B. Barner	22
V. Vankey</			



DAN AND his son, Randy, set out from Sioux City in their pleasure boat.

## Expedition

(continued from page 1)

working in our boat, then it would have gone down," he mentioned. "We had our share of adventures."

They also hit a dike approximately 170 miles from the mouth of the Missouri River. "So the river was still active and fighting us along the way," Johnson said.

"We went through the Council Bluffs area the day after the tornado went through and it took us a long time to get through it all. There were cabinets, trees and even a dead hog floating in the river. You name it. It was in the river," he said.

AT TIMES, it was difficult for the Johnsons to obtain gas for their pleasure boat at convenient locations. And their pleasure boat had to be taken through four locks during the summer journey. The longest wait they experienced, to get

through the locks, was three hours. During their trip, the Johnsons either slept in tents or on the boat. They brought lots of ice and liquids, along with some snack-type meals to munch on.

Johnson said he plans to tie in the information gained from his Missouri River exploration trip into his curriculum this year with his American History students, particularly when it comes to the study of the Louisiana Purchase. Now, with the colorful slides and personal information he has gained, he can explain to his students the experiences and hardships the Lewis and Clark expedition faced.

His high interest in the Lewis and Clark expedition didn't stop with the summer trip. A Council Bluffs man is creating a scale model of the Discovery keel boat for Johnson. Also, Johnson has ordered a rifle kit similar to the one used in the expedition of Lewis and Clark — an

1803 50-caliber rifle that was first issued at Harper's Ferry, Virginia. "I've never fired a flint lock before, so this is something new to me," Johnson said.

HIS SON, Randy, said the exciting parts of the trip included the storm and "seeing how much the river has changed" from the days of Lewis and Clark.

"We didn't see a wide variety of animals, but we did see lot of cranes and eagles," Randy said. The lesson will continue for the Johnsons next summer.

## Rotary Governor arriving

Dan Drain, Governor-elect of Rotary Club District 565, will be in Wayne Tuesday and Wednesday of this week. He will speak at the 7 a.m. Wayne Rotary Club meeting Wednesday at the Sportsman Cafe.

During a 30-year naval career, Governor Drain served as Executive Assistant to the Chief of Naval Personnel in Washington, D.C.; as Chief of Staff at the Force Commander level in both the Atlantic and Pacific Fleets; and had five separate afloat commands. A survivor of the Japanese attack at Pearl Harbor, he is now retired with the grade of Captain.

His second career came in state government, serving the state of Missouri as Executive Director of the Governor's Task Force for International Business Development. Currently he is a member of the Nebraska Environmental Control Council.

He is a member of the Rotary Club of Lincoln.

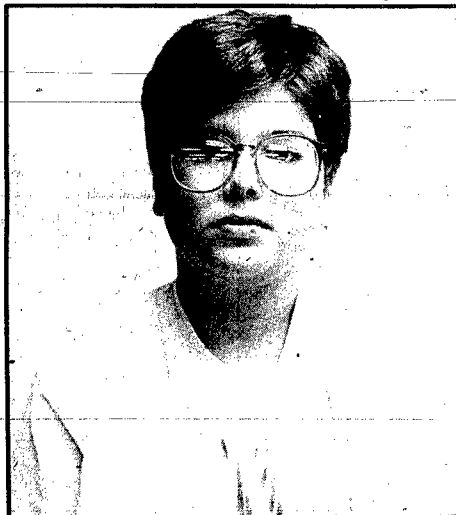
## Gas study

(continued from page 1)

revenue, that initial costs of acquisition such as extensive consultants' fees and administrative costs, and loss of revenue by having third parties rather than local employees operating the gas system.

"Our main concern," the study concluded, "is the theory of substituting utility rates for taxes, which represents a detour from fair and equitable taxation.

## Meet your WAYNE HERALD Marketer carrier



Jason Polt

Jason Polt, age 14, is the son of Roger and Lois Polt at 117 South Maple Street in Wayne. His phone number is 375-3303. He is a ninth grade student at Wayne-Carroll and his favorite classes are Art and Drama. One of his favorite extracurricular school activities is Speech. Among his favorite non-school activities is skating. Jason started as a Wayne Herald and Marketer carrier in April, 1988. He delivers 107 Heralds and Marketers in the Wayne vicinity. Past carriers in his family have included his mother and also his brother, Chris. "It pays good, so try it," said Jason when asked what advice he would give to others who would like to become a carrier. His goal and ambition in life is "to be a great actor."

## A better buy in farm protection.



Farm Bureau has the competitive rates, up-to-date coverages and features that make the Country Squire policy a better buy for you.

Because you choose coverages and optional features, you get just the insurance you want and need.

Ask your local Farm Bureau Insurance agent about the Country Squire policy.

Where belonging makes a difference!

FARM BUREAU INSURANCE CO. OF NEBRASKA LINCOLN, NEBRASKA

**Farm Bureau**  
FAMILY OF FINANCIAL PLANNING SERVICES

DISTRICT AGENCY MANAGER Kenneth A. Day

CAREER AGENTS:

Randolph: Patricia A. Broderson  
Pierce: Susan E. Melinko  
Hoskins: Leroy J. Otto  
Pierce: Edward H. Wotjen  
Coloridge: Becky M. Leapley  
Allen: Stanley C. McAfee  
Wakefield: Ronald G. Wengstrand  
Wayne: Steven R. Jorgensen  
South Sioux City: Greg Hill  
Jackson: Sidney C. MacLaren

WAYNE 402-375-3144 Wayne

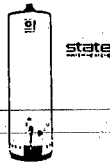
# PEOPLES HAS GREAT SAVINGS ON STATE OF THE ART GAS APPLIANCES!

NOW THROUGH 9/9/88.

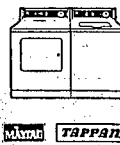
PEOPLES NATURAL GAS  
208 Main — Wayne — 375-1411

- Financing available.
- Pay thru your gas bill.
- Installation available.

SAVE \$25 on a natural gas water heater.



SAVE \$100 on a washer and natural gas dryer. (Save \$50 when purchased separately.)



SAVE \$50 on a natural gas range.



Peoples... Your appliance, parts and service center... Experience at Work.

GAS: AMERICA'S BEST ENERGY VALUE



The Natural Gas Advantage

## BUSINESS & PROFESSIONAL DIRECTORY

### ACCOUNTING

**Max Kathol**  
Certified Public Accountant  
104 West 2nd  
Wayne, Nebraska  
375-4718

### CONSTRUCTION

**OTTE CONSTRUCTION COMPANY**  
• General Contractor  
• Commercial • Residential  
• Farm • Remodeling  
E. Highway 35  
Wayne, Ne 375-2180

**NEBRASKA BUILDERS**  
Box 444, 219 Main Street  
Wakefield, NE 68784  
DENNIS E. OTTE  
Office: (402) 287-2687  
Home: (402) 375-1634

### FINANCIAL PLANNING

**George Phelps**  
Certified Financial Planner  
416 Main St. Wayne, NE 68787  
375-1848



### INSURANCE

**STATE NATIONAL INSURANCE AGENCY**  
Let Us Protect & Service Your Insurance Needs  
305 Main — Wayne, NE  
Marty Summerfield  
Work 375-4888 Home 375-1400

### KEITH JECH INS. AGENCY

IF THINGS GO WRONG! INSURANCE CAN HELP!  
316 Main 375-1429 Wayne

Independent Agent  
DEPENDABLE INSURANCE FOR ALL YOUR NEEDS  
Phone 375-2696

### N.E. NEBR. INS. AGENCY

Wayne  
111 West 3rd



For All Your Insurance Needs Contact:  
**ROY KORTH**  
220 West 7th Wayne, NE  
375-4100

### First National Agency

Gary Boehle  
Steve Muir  
303 Main  
Phone 375-2511

### PLUMBING

For All Your Plumbing Needs Contact:  
**Jim Spethman**  
375-4499  
**Spethman Plumbing**  
Wayne, Nebr.  
REAL ESTATE

REAL ESTATE SPECIALISTS  
• We Sell Farms and Homes  
• We Manage Farms  
• We Are Experts in these Fields  
**MIDWEST LAND CO.**  
Phone 375-3385  
206 Main — Wayne, Nebr.

### COUNTY OFFICIALS

Assessor: Joyce Reeg ..... 375-1979  
Clerk: Orretta Morris ..... 375-2288  
Associate Judges:  
Pearle Benjamin ..... 375-1622  
Sheriff: LeRoy Janssen ..... 375-1911  
Deputy:  
Doug Muhs ..... 375-4281  
Supt.: Glenn L. Wiseman ... 375-1777  
Treasurer:  
Leon Meyer ..... 375-3885  
Clerk of District Court:  
Joann Ostrander ..... 375-2260  
Agricultural Agent:  
Don Spitze ..... 375-3310  
Assistance Director:  
Thelma Moeller ..... 375-2715  
Attorney:  
Bob Enz ..... 375-2311  
Surveyor:  
Clyde Flowers  
Veterans Service Officer:  
Wayne Denklu ..... 375-2764  
Commissioners:  
Dist. 1 ..... Merlin Beiermann  
Dist. 2 ..... Robert Nissen  
Dist. 3 ..... Jerry Posthill

### SERVICES

**WHITE HORSE**  
Shoe Repair & Gas Station  
302 Main St.  
Wayne  
Quality work at the lowest price you can find.

**KENT'S PHOTO LAB**  
Located at Wayne  
Greenhouse  
215 East 10th  
375-1555  
"Have your pictures developed in 1 hour. Your film never leaves town"

**NEBRASKA FLORAL & GIFTS**  
509 Dearborn/Dearborn Mall  
Wayne, NE 68787  
(402) 375-1591

Hours: 9 a.m.-5:30 p.m. Mon.-Sat.  
Also Open Until 9 p.m. On Thurs.  
FRESH FLOWERS & PLANTS,  
SILKS & GIFTS  
We do Weddings and Funeral Flowers,  
a full service florist.

BEDROOM FLORIST SERVICES: WE WIRE FLOWERS ANYWHERE IN THE WORLD  
All Major Credit Cards Accepted  
Large Selection of Helium Balloons For All Occasions.

### THE FINAL TOUCH FRAME & PRINT SHOP

110 So. Logan — Wayne  
375-2035  
Located In Vakoc Building & Home Center

Tired of Garbage Clutter From Overturned Garbage Cans?  
Twice a Week Pickup  
If You Have Any Problems  
Call Us At 375-2147

### MRSNY SANITARY SERVICE

**COLLECTIONS**  
• BANKS • MERCHANTS  
• DOCTORS • HOSPITALS

**ACCOUNTS**  
Action Credit Corporation  
Wayne, Nebraska 68787  
(402) 375-4609

### FOR RENT

**LOIS' SILVER NEEDLE**  
Mens & Womens  
Altering  
To 112 West 2nd (Professional Building)  
HOURS:  
Tuesday-Friday 9-3,  
Saturday 9-Noon

### HABROCK APPRAISAL SERVICE

RURAL AND RESIDENTIAL PROPERTY APPRAISALS  
P.O. Box 133  
Emerson, Nebraska 68733  
Phone: 402-693-2444  
Jennifer Habrock  
Nebraska Licensed Appraiser

**COMPLETE MUSIC**  
DISH JOCKEY SERVICE  
NORFOLK'S OLDEST & LARGEST D.J. SERVICE  
Entertainment Specialists for ALL Occasions  
20 YEARS OF BIG BAND, POP, JAZZ & COUNTRY  
WE PUT YOUR GUESTS "INTO THE SPIN"  
WITH A PERSONAL TOUCH  
371-8428  
600 North 1st Street

**D&D PEST CONTROL & EXT.**  
Della or Patsy Dimmick  
Rt. 1, Box 168  
Phone 603-363-3101 or  
712-277-5148

### ELLIS ELECTRIC

Wayne 375-3566  
Allen  
635-2300 or 635-2456

### HEIKES AUTOMOTIVE SERVICE

• Major Oil Changes  
• Air Filter & Waxes  
• No. 10000 Supplies  
• 24 Hour Weather Service  
• Roadside Service  
419 Main — Wayne  
PHONE 375-4385

EMERGENCY 911  
POLICE 375-2626  
FIRE CALL 375-1122  
HOSPITAL 375-3000



Photography: Dianne Jaeger

## New teachers

**NEW FACULTY MEMBERS THIS YEAR** at Winside High School include, from left, Paul Giesselmann, secondary physical education teacher and girls' volleyball and basketball coach; Barb Kollath, first grade teachers aide; and Leigh Fuhrman, home economics teacher and guidance counselor.

## Winside News

Dianne Jaeger 286-4504

**ADVISORY COUNCIL**  
Officers of the Winside Advisory Council hosted a "Meet the Teachers and Staff" coffee on Aug. 25 at the Winside Stop Inn. Approximately 75 persons attended the event, including District 17 State Senator Gerald Conway.

Principal Ron Leapley and Superintendent Don Leighton welcomed those attending and had each teacher and staff member introduce themselves.

Coffee, tea and juice were provided by the Stop Inn, with free doughnuts provided by the Advisory Council.

Winside has two new teachers and a teacher's aide this year.

Paul Giesselmann, a native of Snyder, is a 1988 graduate of Wayne State College. He will be Winside's secondary physical education teacher as well as the girls' volleyball and basketball coach.

The new home economics teacher and guidance counselor at Winside is Mrs. Leigh Fuhrman of Norfolk. She is a graduate of Wayne State College and previously taught in Norfolk and has been a substitute teacher in several school systems. She and her husband, Shawn, are the parents of three children.

Mrs. Barb Kollath will be a first grade teacher's aide. She has a bachelor of science degree in elemen-

tary education and has done graduate work at Wayne State College, the University of Nebraska-Lincoln and Kearney State College. She previously taught at the Youth Development Center in Geneva, District 10 in Stanton County and the Hadar Public School system. She is married to Ken Kollath and they have two sons.

The next Advisory Council meeting will be Sept. 27 at 8 p.m. in the high school library.

### SERVICE AWARD

Ballot boxes for Winside's annual community service award will be placed in a number of local businesses on Monday, Aug. 29 through Friday, Sept. 9 for your convenience.

Last year's award winner was Peg Eckert of rural Winside.

The top three nominees this year will be invited to the Sept. 11 Winside Area Boosters meeting at the Legion Hall at 8 p.m. when the winner will be announced. As winner you will be invited to attend Norfolk's LaVilse breakfast and parade the end of September, participate in other local parades and presented a traveling plaque and a monetary gift.

Boxes can be found at Oberle's Market, Winside State Bank and the Winside Stop Inn.

### TOPS

Members of TOPS NE 589 met

Wednesday for weigh-in. A new "Safari contest" will start next week and run for five weeks. A quiz was given on the amount of sugar in foods.

The next meeting will be Wednesday, Aug. 31 at Marian Iversens at 6:30 p.m. Anyone wanting more information can call 286-4425.

### RESCUE CALLS

Winside Volunteer Rescue Squad transported Mrs. Alfred Janke to the Lutheran Community Hospital in Norfolk on Tuesday at 6:45 a.m. due to illness.

The backup unit of the Winside Volunteer Rescue squad transported Elsie Burris of Winside to Lutheran Community Hospital in Norfolk at 10:10 a.m. Wednesday due to illness.

Dorothy Jo Andersen and Marian Iversens of Winside and Nancy Boltsofsen of Lincoln returned home Aug. 20 after a six day trip to Illinois and Wisconsin to visit relatives. In Kenosha, Wis. they visited in the William Hansen home and in Barrington, Ill. they visited in the home of Dr. R.C. Jensen.

Visiting in the John and Elsie Asmus home from Aug. 13 to 20 was their daughter, Mrs. Marilyn Capps of Lakewood, Colo. Aug. 19-21 guests were Mr. and Mrs. Leo Asmus of Dixon, Mo.

## Waste petition on ballot

A vote will take place on Nov. 8 on whether to keep the state in a low-level radioactive nuclear waste disposal compact.

Circulators for Nebraskans for the Right to Vote needed 39,510 valid signatures to get the low-level radioactive waste issue on the Nov. 8 ballot. They submitted 57,611 signatures and 52,182 of the signatures were validated according to Secretary of State Allen Beaermann.

The proposal to withdraw Nebraska from the five-state Central Interstate Low-Level Radioactive Waste Compact, and to give state and local voters a say in where the waste sites will be located, will be Measure 402 on the ballot.

A committee has recently been formed to support Nebraska remaining in the Central Interstate Low-Level Radioactive Waste Compact. The committee is called Nebraskans Against Breaking Our Word on the Compact.

A spokesman for the committee, Dr. Sam Mehr of Omaha, said the committee will work to defeat the Nebraskans for the Right to Vote initiative.

## Carroll News

Mrs. Edward Fork 585-4827

### SENIOR CITIZENS

Ten were present when the Senior Citizens met at the fire hall Monday for an afternoon of cards.

Birthdays were signed for Mrs. Mary Drake, Mrs. Lena Rethwisch and Mrs. Louise Boyce and a "thinking of you" card for Lloyd Morris who is a resident of the Wayne Care Centre.

Mrs. Don Frink served. The event also honored the birthday of Mrs. Paula Paustian.

Prizes were won by George Johnston, Mrs. Arthur Cook and Mrs. Barbara Bring.

The group will meet today (Monday) for a cooperative lunch and afternoon of cards.

### WOMANS CLUB

The Carroll Womens Club will resume their meetings for the 1988-89 club year on Thursday, Sept. 8 at 2 p.m. at the Carroll Steakhouse. Roll call will be "bring a doll and tell the history of it." Mrs. Erwin Morris will have the program and will bring her doll collection. Mrs. Merlin Kenny and Marie Bring will serve.

Women of the Carroll area who would like to become a member of the club are invited to attend.

Mrs. Wayne Kerstine is president; Mrs. Cyril Hansen, vice president;

Mrs. Lynn Roberts, secretary; and Mrs. Arnold Junck, treasurer.

### WAY OUT HERE

The Way Out Here members and their families had their annual club picnic Aug. 19 at Bressler Park in Wayne. The last of the current club year meeting will be held Sept. 27 at the Lester Menke home when election of officers for the new club year that begins in October will be held.

Mrs. Ray Loberg received her birthday gift from her secret sister.

Leonard Halleen was honored for his birthday when evening guests in their home Aug. 17 were Mr. and Mrs. Gordon Davis and Kelli, Mr. and Mrs. Jerry Junck and Mrs. Loren Stoltenberg. Mr. and Mrs. Doug Leiting and Derreck of Colorado Springs left Aug. 14 after spending a week with his grandparents, Mr. and Mrs. Leonard Halleen. Mrs. Halleen, who had her birthday Aug. 20, was honored with a supper out in Norfolk that evening.

Rhonda Dahlkoetter of San Ramon, Calif. left Aug. 20 after spending two weeks with her mother, Mrs. Marlene Dahlkoetter, and other relatives and friends. Mr. and Mrs. Leonard Halleen hosted supper at the Black Knight in Wayne on Aug. 16 for Rhonda and her mother.

Mr. and Mrs. Allen O'Connor of Sioux City were visitors Tuesday in the homes of Mrs. Barbara Bring and Marie Bring. Mrs. O'Connor is the former Bernice Keifer of Belden.

Mr. and Mrs. Russell Hall went to Tomah, Wis. Aug. 19 and 20 where they attended the World War II, 153rd Company of Russell's Army buddies. The event is held every two years.

Mr. and Mrs. Lyle Cunningham of Carroll and Mr. and Mrs. David Luft of Wayne went to Sioux City Sunday where they visited in the Mrs. Leo Meler home.

Lori Shufeldt of Sioux City came Aug. 20 and was an overnight guest of her grandparents, Mr. and Mrs. Ervin Wittler. Carl Jorgensen of Creighton, Mrs. Lorene Paten and Mrs. Mildred Dunn, both of Randolph, were Aug. 21 evening guests in the Wittler home.

Asriad Schimmel of the Netherlands arrived Aug. 19 as an exchange student. She will be at home with the student. Mrs. Davis family and will attend Wayne-Carroll High School as a senior.

Mr. and Mrs. Mike Bruce, Michael and Joey of San Antonio, Texas and Dallas Hansen were supper guests Monday in the Martin Hansen home. The women are sisters.

## Leslie News

Mrs. Louie Hansen 287-2346

### CLUB PICNIC

The Even Dozen Club held its annual family picnic last Tuesday evening in the Wakefield city park with all members and their families attending.

Guests were Carol Ulrich, Wendy, John and Adam.

Next regular meeting will be Sept. 20 with Mylet Bargholz as hostess.

The Ed Krusemarks took Sarah Stuart of Omaha to her home last Friday night, and on Saturday they helped Valerie Krusemark get settled in her apartment in Omaha where she will be attending the University

of Omaha. Krusemarks were guests of Gary Krusemark in Omaha on Saturday night and Sunday.

The Emil Mullers and Mrs. Louie Hansen were guests in the Marcee Muller home, Tecumseh, last Friday to Monday. Joining them there for the weekend were the Fred Von Seggers of Montrose, Colo., and Heather, Jim and Jason Von Segger of San Diego, Calif. They had visited their daughter, Jane, in Atlanta, Ga.

Mrs. Jerry Anderson observed her birthday Aug. 17. Her mother, Mrs. Erwin Böttger, came from Providence Medical Center in Wayne to spend the afternoon, returning to the hospital in the evening. Other guests included Mrs. Herman Oetken, Teresa Paulson and family, the Paul

Henschkes, Helen-Jose and Erwin Böttger. Evening guests were Erwin Böttger, Verona Henschke, the Alvén Andersens and the Terry Henschke family. Mrs. Carl Anderson and Tara were Friday morning coffee guests.

The Arvid Samuelsons attended the annual Frey family reunion held Aug. 21 at the fire hall in Lyons.

The Jerry Andersons, Mindy and Kassi, joined guests in the Terry Henschke home last Thursday night to help Jessica celebrate her 11th birthday.

The Bill Greves and Linda, Rod Gilliland and the Roger Leonards, Brent and Brandon, spent several days last week camping and fishing at Mars Beach at Madison, S. D.

## Service Station



Steven Jorgensen

Steven G. Jorgensen, son of Mr. and Mrs. Gene Jorgensen of Winside, was graduated Aug. 19 from basic training Company 170 of the Great Lakes Naval Recruit Training Command, Chicago, Ill.

The Gene Jorgensens and Tina Hartmann of Winside attended the ceremony which graduated 986 naval recruits.

Jorgensen has been advanced to Airman and left for Memphis, Tenn. Naval Training Center to attend Aviation Structural Mechanic Emergency Equipment A-School.

He is a 1988 graduate of Winside High School.

MM3 Christopher A. Jorgensen is visiting in the Winside area for a short time after completing boot camp and Machinist Mate Nuclear Field A-School and Naval Nuclear Power School at the U.S. Naval base in Orlando, Fla.

Jorgensen is on his way to Idaho Falls, Idaho to report to the Nuclear Prototype Training Unit for six months training, maintenance and operation of a naval nuclear reactor propulsion system.

He is the son of Gene and Carol Jorgensen of Winside.

## Deceptive mailing targets the elderly

**An Attack on Deceptive Mailings**  
The House of Representatives in early August passed a bill (H.R. 4478) which is aimed at curbing deceptive mailings. The bill would require disclaimers on mailings which carry an insignia which inaccurately implies a connection with the Federal government. It also would require disclaimers on mailings which are presented as bills or invoices, but which actually are solicitations for funds, and on mailings which offer, for a fee, products or services that are provided by the Federal government for free or at a lower price.

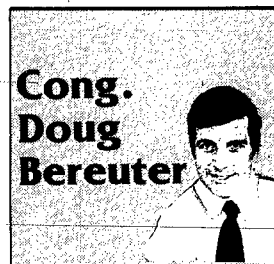
Many of these deceptive mailings are targeted at the elderly — especially Social Security recipients. Some organizations have offered to obtain senior citizens' Social Security earnings records for a fee. The Social Security Administration will provide that information at no cost.

A similar bill (S. 1933) is pending in the Senate Government Affairs Committee. No action has been taken on it.

### Pioneer Farm Families Honored

Over 200 Pioneer Farm Families will be honored by Ak-Sar-Ben in September for a century of family farm ownership. Sixty-six First Congressional District farm families, representing 23 counties, are among those to be recognized. (Included among these special families are Jim and Carol Barr of York. Jim has served as an agriculture and natural resources specialist in a part-time capacity on my staff since 1979.)

All of these Pioneer Farm Families are to be congratulated for the proud tradition that they have helped to maintain for their families and for the state. Continued presence on the same land over so many years is a tribute to a family's commitment to agriculture. This is especially true in



Cong. Doug Bereuter

light of the crises many farmers have had to face.

### Start Military Academy Applications Early

Young men and women interested in pursuing a career in any of the military service academies should begin the application process early. Applications for nomination for the summer of 1989 should be in my District Office by November 1, 1988.

All applicants must take the Scholastic Achievement Test (SAT) or the American College Test (ACT) exam. Because the SATs may be taken more than once and the highest score will be used, applicants are encouraged to start early.

Those interested in the United States Army, Navy, Air Force and Merchant Marine academies must secure a nomination for an appointment. Students interested in the Coast Guard Academy do not need a congressional nomination.

Applicants may obtain information by writing or calling the First District Congressional Office, P.O. Box 82887, Lincoln, Nebraska 68501, (402) 437-5400.

## Obituaries

### Hazel Barg

Hazel Barg, 71, of Wayne, died Thursday morning, Aug. 25, 1988 at the Pender Hospital.

Private family services were held Saturday, Aug. 27 at the Schumacher Funeral Home in Wayne.

Hazel Louise Barg, the daughter of Joseph and Nettie Perry Harris, was born Sept. 15, 1916 on a farm west of Emerson. She married Raymond Barg on Dec. 7, 1935 at Ponca. The couple lived in Emerson, Wakefield and Wayne areas since 1961.

Survivors include her husband, Raymond Barg of Wayne; one son, Robert Barg of Norfolk; four daughters, Mrs. Earl (Rita) Rhods of Wayne, Mrs. Charles (Colleen) Parker Sr. of Norfolk, Mrs. Dick (Judy) Danielson of Norfolk and Mrs. George (Sherry) Green Jr. of Grand Island; 15 grandchildren; 19 great grandchildren; one sister, Mrs. Arel Metzdorf; and many nieces and nephews.

Burial was in the Rosehill Cemetery in Emerson with Schumacher Funeral Home in charge of arrangements.

### Charles Sieckmann

Charles A. Sieckmann, 92, of Wayne died Tuesday, Aug. 23, 1988 at the Park View Haven Nursing Home in Coleridge.

Services were held Friday, Aug. 26 at the Redeemer Lutheran Church in Wayne. The Rev. Franklin E. Rothfuss officiated.

Charles August Sieckmann, the son of Fred and Alvina Mussman Sieckmann, was born March 17, 1896 in Fillmore County. He was baptized and confirmed at St. Johns Lutheran Church in Ohioa. He married Martha Most on Feb. 5, 1920 at Ohioa. The couple farmed in southeast Nebraska until 1940 when they moved to Wayne. He was a member of the Redeemer Lutheran Church, the Lutheran Church Men, VFW, Legion and World War I Barracks.

Survivors include two sons, Eugene of Greeley, Colo. and Reverend Robert of Northglan, Colo.; two daughters, Mrs. Marlene Grebin of Denmark, Ark. and Mrs. Fred (Angeline) Ellis of Wayne; five brothers, Fred of Geneva, Ed of Hastings, Howard of Ririe, Idaho, Jess of Grand Island and Dallas of Boulder, Colo.; one sister, Mrs. Grace Mattheis of Ohioa; 13 grandchildren; and 11 great grandchildren.

He was preceded in death by his parents; his wife, Martha; two sons, Donald and Eldo; one son-in-law, Ronald Grebin; and one grandson, Gary Lee Grebin. Pallbearers were Warren Summers, Mark Ellis, Mike Biltoft, David Ellis, Rowan Wilfse and Dennis Linster.

Burial was in the Greenwood Cemetery in Wayne with McBride-Wiltse Mortuary in charge of arrangements.

**Waddell & Reed**

**FINANCIAL SERVICES**

TAX SHELTERS • MONEY MARKET FUNDS • REAL ESTATE INVESTMENT PROGRAMS • COMMON STOCK FUNDS • COMPUTERIZED FINANCIAL PLANNING • LIFE, DISABILITY, MEDICARE SUPPLEMENT INSURANCE

• MONEY ACCUMULATION PLANS • KEOGH/IRA PLANS • MUNICIPAL BOND INVESTMENTS

**RIC WILSON • WAYNE • 375-2674**

Offered through affiliated companies.

**NEW LOW PRICE!**

**TWO ON TUESDAY**

**DOUBLE PRINTS**

12 Exp. ....	\$2 <sup>67</sup>
15 Exp. Disc .....	\$3 <sup>57</sup>
24 Exp. ....	\$4 <sup>97</sup>
36 Exp. ....	\$6 <sup>97</sup>

Sav-Mor Pharmacy 1022 Main St. Wayne, NE 68787 (402) 375-1444

**You Never Wanted To Be Rich, Just Comfortable.**

**Eagle Shield Radiant Barrier Does What No Bulk Insulation Can.**

If you have ever had an air conditioner in your home or car, you know that a radiant barrier could be the answer to your energy needs.

- Works with your existing insulation.
- Easily installed by the do-it-yourselfer or the professional.
- Actual savings are affected by climate, radiant energy use patterns, your present insulation, size of home and type of construction.
- Made from two layers of 95% pure reflective grade aluminum die an emission barrier to a thermal insulator. The coating of layers of polyethylene and fiberglass acts as a moisture barrier.

Your satisfaction is important to us. When you purchase Eagle Shield radiant barrier you can be comfortable with the product and with the company. ASK ABOUT AVAILABLE FINANCING. The reflective technology we work in your homes or office with Eagle Shield.

FOR INFORMATION CONTACT  
**DEBI BONDS**  
1204 Crescent Dr.  
Wayne, NE 68787  
375-1799

Providing a more comfortable life.  
**George Sherry**  
Wayne, NE 68787  
Phone 375-5213

**Business Notes**



**Gloryann Koester**

Gloryann Koester of Allen was recently named to the Court of Unit Sales during Mary Kay Cosmetics' "Silver Celebration" national seminar, celebrating the company's 25th year in business.

Koester, who joined the company in 1974, received the award for her outstanding achievements in the 150,000-member sales force.

"Gloryann is a wonderful career role model," said company founder Mary Kay Ash who presided over the series of meetings Aug. 1-13, which attracted a record attendance of more than 25,000.

The annual seminars provide management and sales training opportunities and recognition for the company's outstanding achievers.

Koester was honored during an awards ceremony where she was presented a European trip and a choice of a luxury gift.

Mark A. Sorensen, assistant vice president of the State National Bank and Trust Company, Wayne, was among 26 graduates of the National Agricultural Bank Management School at Iowa State University, Ames, Iowa, according to the American Bankers Association.

"The school was a valuable experience for me," Sorensen said, "because the challenge before the agricultural bank today is to meet the needs of its community and at the same time satisfy the profit expectations of its stockholders."

The National Agricultural Bank Management School gives agricultural lending officers the opportunity to develop and broaden their skills in farm lending practices. Students also have the valuable opportunity to meet with other agricultural bankers from across the nation to share ideas.

"The school provides the opportunity for mid-level and senior managers to broaden the skills we will need to meet the challenges and community needs of the future," according to Sorensen.

The agricultural school is a two-year advanced program and requires two one-week resident sessions, written examinations and comprehensive problem-solving sessions. Besides this year's 26 graduates, 29 bankers completed their first year of course work.

A new self-service car wash opened last week in Hoskins and is located near Hoskins Manufacturing Co. at the north end of Main St.

The car wash, which will be open 24 hours a day, is owned by Mr. and Mrs. Richard Doffin Sr., who with their sons have owned and operated Hoskins Manufacturing Co. for 21 years.

**Hoskins News**

Mrs. Hilda Thomas  
565-4569

Tommy and Beckie Behmer of Wisner were Aug. 19 weekend guests of their grandparents, Mr. and Mrs. Vernon Behmer.

Aug. 19 weekend guests in the Mr. and Mrs. Emil Gutzman home were Mrs. Steve Singleton, Merlin and

Kids Movies Every Day Only \$1.00!  
Nintendo Sale - With \$25 Free Package. Includes \$10 Guide Book.

New "Planes, Trains & Automobiles" "Police Academy 5"

Can Number Five and Ben make it in the big, bad city?

**SHORT CIRCUIT**

Nightly at 7:20 Only. Aug. 26-Sept. 1 Bargain Tues. 7:20, Bargain Sun. Mat. 2 p.m.

TERROR BEYOND YOUR WILDEST DREAMS  
**A Nightmare**

Final Week. Ends Sept. 1. Nightly at 9:10. Bargain Tues. 9:15 p.m.

**Speed near construction causes fear of fatalities**

There are more construction projects currently on the highways and Interstate across Nebraska than at any other time this summer. Although no construction-related fatalities have occurred in the last few years, the Department of Roads is concerned with the speed with which motorists travel near work sites.

Even though there have been no fatalities in the last four years, the potential for highway tragedies persists. Drivers become desensitized to signs and warnings because they see them so often across the state. Workers can also become desensitized to the level of danger in their work areas. They grow accustomed to traffic being so close.

"People need to be reminded to pay attention to work zone signing.

It's there for a reason. Drivers who aren't slowing down in reduced speed zones are risking not only the lives of workers on the road but also their own," says G. C. Strobel, Director, State Engineer of the Department of Roads.

"We have increased work zone safety training for our workers and are constantly emphasizing proper safety precautions and the need for alertness to unexpected dangers," Strobel adds.

Road construction under traffic conditions is a sign of the times. Everyone is at risk in a work zone and one careless mistake could result in a serious or fatal accident. Motorists, contractors and highway maintenance and engineering crews all must be reminded that their lives are on the line.



Institute of Agriculture and Natural Resources photo.

**UNL EXTENSION Irrigation Specialist Bill Kranz (right) and Kevin Fairbanks (left), a research engineer, discuss research on tillage systems that could help reduce center pivot irrigation runoff. Their research plot was one of the four stops Tuesday (Aug. 23) during the University of Nebraska Northeast Research and Extension Center's Field Day near Concord.**

**News Briefs**

**Weber attends workshop**

Band directors from elementary, junior and senior high schools in Wyoming and the Midwest previewed over 600 musical releases during the University of Wyoming's biennial New Materials for Band Reading workshop. Participants performed, conducted and evaluated works from 1987 and 1988 in order to provide assessments for publication of future releases, according to Ronald Kuhn, UW professor of music and workshop director. Among the participants was Brad Weber of Wayne.

**Baier elected chairperson**

Mrs. Carrol M. Baier, RN and Director of Nursing Services at the Wayne Care Centre, has recently been elected as Northeast District's chairperson for the Gerontological Nurse Section of the Nebraska Health Care Association.

At the same meeting, Adeline Shabram, RN and Director of Nursing Services at the Pender Care Center, was elected vice-president. The group meets quarterly in Norfolk at the Elks Club for six hours of nursing seminars. The appointment is for a two-year period.

Baier became DON of the Wayne Care Center in February 1984 and has been responsible for revamping the entire "care" program for the residents and for the more favorable standing of nursing care for the Centre within the nursing home community.

**Spacing affects performance**

Many Nebraska swine producers probably are providing less space than is needed for peak pig performance because of a trend toward heavier hogs, an extension swine specialist said.

Feed intake and rate of gain are the first symptoms of livestock crowding and feed conversion also may suffer, depending on the severity of crowding, said Mike Brumm, swine specialist at the University of Nebraska's Northeast Research and Extension Center near Concord.

Brumm outlined his research during the Center's Field Day last Tuesday, Aug. 23. About 200 people toured 14 research projects during the day.

In the past five years, the packing industry has pushed swine producers to market hogs at heavier weights, Brumm said. Many producers now sell hogs at 240-250 pounds rather than the 210-215 pound sale weights typical of earlier years.

Most producers probably aren't allowing more space for the larger hogs, he said.

RESEARCH ON swine space requirements was conducted in the late 1960's and early 1970's when hogs were sold at lighter weights, Brumm said. That research recommended allowing eight square feet for each hog at 200 pounds or more, but there is little information on space requirements for heavier hogs.

"Producers are running the same number of pigs in the same space as they did earlier," he said. "On farms, we're often seeing six square feet and raising hogs to 240 pounds," he said.

Researchers don't know how much space to recommend for larger hogs.

More than 25.5 million acres have been enrolled in CRP during the first six signups. The USDA goal is to bring 40-45 million acres into the program by the end of 1990.

Producers interested in enrolling in CRP should contact their Agricultural Stabilization and Conservation Service county offices for details.

**CRP enrollment will add to drought options**

The U.S. Department of Agriculture said that farmers with highly erodible cropland affected by the drought should consider enrolling it in the Conservation Reserve Program during the current signup period, ending Aug. 31.

"Enrollment in CRP is another option available to help farmers affected by the 1988 drought," said Vern Neppi, acting executive vice president of USDA's Commodity Credit Corporation.

"Producers may bid to enroll in CRP eligible land which has not been harvested in 1988 due to the drought," Neppi said. "If their bids are accepted, the producers will receive their first CRP rental payments in 1988. Also, they will be guaranteed payments for nine more years, an additional source of income regardless of weather conditions during those years."

CROPLAND THAT has been hayed in counties approved for drought relief is eligible for CRP if it meets program requirements, but there may be a reduction in the 1988 payment, Neppi said.

Producers also have the option of

enrolling eligible land in the 1989 CRP during this signup period.

Under CRP, producers receive annual rental payments for 10 years to keep highly erodible cropland out of production and planted with grass or trees. CRP participants also receive cost-share payments of up to 50 percent of the cost to establish the vegetative cover.

Enrollment of erodible land in CRP will help farmers meet the conservation provisions of the Food Security Act of 1985, Neppi said. Producers must have an approved conservation plan for erodible land in place by Jan. 1, 1990 to remain eligible for USDA program benefits.

More than 25.5 million acres have been enrolled in CRP during the first six signups. The USDA goal is to bring 40-45 million acres into the program by the end of 1990.

Producers interested in enrolling in CRP should contact their Agricultural Stabilization and Conservation Service county offices for details.

**CERTIFICATE OF DEPOSIT**

Available For A Limited Time Only

**5 YEAR CERTIFICATE**

\$5,000 Minimum Deposit

**8.00%**

Substantial Penalty for Early Withdrawal

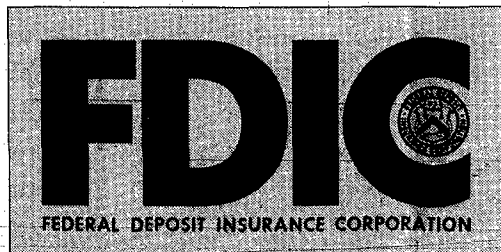


**The State National Bank and Trust Company**

110 West 1st St. • Wayne, NE 68791 • 402-375-1130 • Member FDIC

A message from the Nebraska Bankers in your hometown.

**YOUR SIGN OF PROTECTION IN BANKING.**



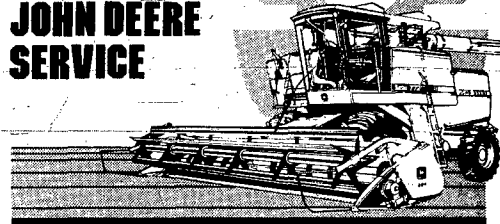
The initials FDIC in the window of your Nebraska bank mean your money is protected by the Federal Deposit Insurance Corporation. Established in 1933 as an independent agency of the federal government, the FDIC's purpose is to insure bank deposits, maintain sound financial conditions in our banking system and protect our nation's money supply.



**The State National Bank and Trust Company**

Wayne, NE 68797 • 402/375-1130 • Member FDIC  
Main Bank 110 West 1st • Drive-In Bank 10th & Main

**AFFORDABLE. THAT'S JOHN DEERE SERVICE**



**AFFORDABLE...** Because our skilled technicians will use genuine John Deere parts and perform all your work thoroughly and conscientiously. Your equipment will operate at peak performance levels and that means improved efficiency—and affordability.  
**AFFORDABLE...** because off-season specials, like the one we're having right now, allow you to get service work taken care of when you can afford the time to do it...before the busy season.  
**AFFORDABLE...** because we can troubleshoot for potential problems while your equipment is in the shop. And that's much more affordable than discovering those problems in the field. Give us a call today and check out our John Deere Service special. It's the *affordable* way to keep your equipment on the go.



Go With The Green  
**John Deere Service**

**LOGAN VALLEY IMPLEMENT**

East Hwy. 35 — Wayne, Nebr.  
**402-375-3325**

**JOHN DEERE COMBINE OWNERS COMBINE MAINTENANCE CLINIC THURSDAY, SEPT. 1 7:30 P.M.**

COMBINE PARTS & ATTACHMENTS ON SPECIAL. PLASTIC SKID PLATES, TIGER JAWS SICKLES. REFRESHMENTS AFTER MEETING

**Classified Hotline**  
Call Toll Free 1-800-672-3418

# Classifieds

**REGULAR RATES**  
Standard Ads — 25¢ per word  
(Minimum of \$3.00)  
Third consecutive run half price  
Display Ads — \$3.50 per column inch

**SPECIALTY RATES**  
Cards of Thanks  
\$3.50 for 50 words  
\$5.00 for 50-100 words  
\$7.50 for 100-150 words  
\$9.00 for 150-200 words  
Garage and Auto Sales  
1x2 for \$4.50 — 2x2 for \$9.00  
2x2 for \$13.50 — 3x3 for \$20.25  
2x5 for \$22.50

**DEADLINES**  
4 p.m. Tuesdays and Fridays  
Call 375-2600 — The Wayne Herald

## Help Wanted

**Our business is expanding. The Milton G. Waldbaum Co., in Wakefield, Ne. is accepting applications for the following:**

- ★ **EGG PRODUCTS DIVISION** — openings on 7 a.m. to 3:30 p.m. and 4 p.m. to 11 p.m. shift. Full and part-time positions available. No experience necessary. Students welcome.
- ★ **GRADER PERSONNEL** — No previous experience necessary. Openings on day shift at Main plant and Big-Red Farms.
- ★ **POULTRY HOUSE PERSONNEL** — Individuals responsible in the care of our layers. Some maintenance ability helpful.
- ★ **PAINTER** — Competent individual for painting of both interior and exterior surfaces. Prior experience a plus.
- ★ **SPREADER TRUCK/MANURE DRYER OPERATOR** — Responsible individual to learn all phases of our manure handling operation. Drivers license required. Farm experience helpful, but we will train.
- ★ **TRUCK DRIVERS** — Drivers for tractor/trailer team operation. Home most weekends. Must be minimum of 23 years old, possess valid drivers license and have good driving record...2 years verifiable experience preferred, but training available to minimum experience drivers.

Applications taken from 8 a.m. to 5 p.m. daily and 8 a.m. to noon on Saturdays. Apply in person at the Main Plant in Wakefield, NE. An EO/AA Employer.

## Substitute Teachers

Coleridge Community Schools is in the process of updating substitute teacher lists for the 1988-89 school year. If interested in substituting in our district contact Dan Hoising at 283-4844.

**STANTON TELEMARKETING, Inc.** is now accepting applications for highly motivated individuals with good communication skills. If you want a job that offers an excellent wage, working conditions and weekly incentives, apply at Stanton Telemarketing, Inc., 1016 Ivy, Stanton, NE. or call 439-2400 after 5 p.m. A2512

**PEN RIDER WANTED.** Herb Ahlvers Feedlot, Wisner. Contact Herb or Jerry at 529-6626 or 529-6586. A2914

**HELP WANTED:** Part-time telephone sales for work evenings in Wayne in September & October. Call Jackie Nolan at 375-2600 to sign up for free one-day seminar Sept. 9 on selling by telephone. We will hire from those who take the course. The Wayne Herald & Marketer, 114 Main. A1815

**HOW MANY** organizations do you know that offer a part-time job with full time benefits? The one in Wayne is the Nebraska Army National Guard. The extra income and pride in being a part of this community based organization are only two of the benefits you will enjoy. Take the challenge, become a "prairie soldier." Be part of a heritage that is stronger now than ever before. Call 375-4653 in Wayne today for more information. A119

**WANTED:** Night and weekend help. Apply at Casey's General Store. A2914

**HELP WANTED:** Assistant Director of Nursing. Daytime hours, benefits available. Apply at Wisner Manor or call 529-3285. F25ff

## For Sale

### PRE-OWNED CAMPERS

36' Gulf Street 1987 F.W.  
30' NuWay, air & awning  
18' DelRay, awning  
21' Concord  
Coleman, 8 sleeper, fold-down Starcraft, 6 sleeper, fold-down 7' Eldorado pickup camper  
8' NuWay pickup camper  
**WE PAY CASH FOR USED CAMPERS**  
\*\*\*\*\*  
1984 Sunstream 32' Motorhome 454 Chevy chassis - 13,500 miles  
**LOADED**  
Dash & roof air - central vac - micro - 4K generator  
\*\*\*\*\*  
Winnebago Sportsden 1977 24' Gen - Air - Sharp  
1978 Dodge Mini Van 22' Excel Camper  
Reasonably Priced  
\*\*\*\*\*  
**NEW NEW NEW**  
Numerous STARCRAFT Pickup Campers & Fold-Down Units  
\*\*\*\*\*

21' Foxfire - close out price  
23' Foxfire - close out price  
26' Foxfire - front livingroom  
29' Foxfire - air & fiberglass siding  
33' Foxfire - air & fiberglass siding  
20' Starcraft - (double bed)  
20' Starcraft - (twin bed)

**FULL RV SALES & SERVICE OPEN**  
Saturday 8 a.m.-1 p.m.  
Monday 8 a.m.-8 p.m.  
**LARSON'S CAMPERLAND & LAWN EQUIPMENT**  
Dakota City, NE  
PH 987-3142

## Wanted

**WANTED TO RENT:** 1 bedroom apartment or room in Wayne or Wakefield. Call Amber Inn, Room 34, ask for Alan. 375-4222. A2912

**WANTED:** Jukeboxes, old slot machines, older Coke and pop machines, gumball & peanut machines, Neon signs, old beer and pop advertising. Will pickup! Call 312-464-5661 or write R. Newman, 9N920 Meadow Dr., Elgin, Ill. 60123. A2916

### WANTED — RESIDENTS

Wayne Care Centre has 11 beds ready for immediate occupancy. Both male and female. This includes 3 rooms ideal for husband and wife.

Contact Gil at 375-1922

## Automobiles

1973 VW SUPER BEETLE FOR SALE. AM-FM with cassette. New front-end, brakes and rebuilt transmission. \$700. Call 375-1141 after 5 p.m. A2213

## Work Wanted

EXPERIENCED housecleaning. References, for free estimate. Call Joy 375-9917, Room 111. A2913



**FOR SALE**  
102 S. Douglas  
420 Pearl  
521 Pearl  
720 Nebraska  
Terms Available  
Call:  
**State National Bank**  
375-1130

## STOCK MARKETS

The following market quotations are provided by Paula Pflueger, Edward D. Jones & Co., Wayne. Dow Jones Industrial Index at 3 p.m. Friday was 2017.42 up 6.58 and volume was 89,240,000 on the N.Y.S.E.

STOCKS	LAST	CHANGE
Aetna (AET)	47 3/8	- 3/8
AN Softwr (AMSW)	15 1/8B	+ 1/2
AT&T (T)	25	---
Anheus Busch (BUD)	29 1/2	- 1/8
Apple Comp (AAPL)	40 1/4A	+ 1/8
Banc One (ONE)	25 3/8B	- 3/8
Baxter Trax (BAX)	19 7/8	- 1/8
Bell Int'l (BIL)	68 3/4	+ 1/4
Bell S W (BLS)	39 1/8	+ 1/4
Berksh Hath (BRK:Q)	4275 B	+ 350
Chrysler (C)	22 3/8B	+ 1/8
Coated Sales (RAGBE)	13 1/16 B	---
Coca Cola (CO)	39 3/4	+ 5/8
ConAgra (CAG)	31 1/4	+ 3/8
Cummr Fed (CFRN)	9 5/8 B	+ 3/8
Deere (DE)	44	- 1/4
Eastman Kodak (EK)	42 1/8	+ 1/4
Enron (ENE)	38	- 7/8
Exxon (XON)	46 1/4	+ 1/2
Ford (F)	48 1/4	- 1/4
Gen Elect (GE)	39 3/4	- 3/8
Gen Host (GH)	10 1/8	---
Gen Motors (GM)	72	- 3/8
Goodyear (GT)	59 1/2	+ 1/2
Great Falls (GFCC)	6 1/4 B	---
IBM (IBM)	112 1/4	+ 5/8
IBP (IBP)	13 1/4	+ 1/4
ICN Pharm (ICN)	6 1/8 B	---
Ill Power (IPC)	19	---
Intel (INT)	22 3/4	---
JC Penney (JCP)	45 3/4	- 3/8
K-Mart (KM)	31 5/8	- 1/8
Marriott (MHS)	26 7/8	+ 3/8
Maxicare (MAXIC)	3/4	---
McDonalds (MCD)	43 5/8	+ 1/4
Merck (MRK)	55 3/8	+ 3/8
MetLife - Ed (METL)	72 1/8	+ 1/4
Midwest Dnr (MWE)	19 1/8	---
Navistar (NAV)	5 1/8	---
N W Pub Serv (NWPS)	17 3/4	---
Nucor (NUE)	42 1/2	- 1/4
Occident Pet (OPY)	25 7/8	- 1/8
Pac Tel Grp (PAC)	27 7/8	---
Packaging Corp (PKC)	35	- 1/8
Pepsi (PEP)	35 1/8	+ 3/8
Phil Morris (MO)	90 3/4	- 1/4
Pub Serv N M (PNM)	12 1/2	+ 1/8
Sears (S)	35 1/4	+ 1/8
SO W Bell (SBC)	37 1/2	+ 3/8
Texasco (TX)	45 1/2	+ 1/4
Univ Int Res (UNR)	18 1/4	+ 1/4
Upjohn (UJ)	31	- 3/8
US Health Cr (USHC)	4 11/16	- 1/16
US West (USW)	53 3/4	+ 1/8
Wal-Mart (WMT)	30 3/8B	+ 1/8
Walt Dis (DIS)	61 5/8	+ 5/8
Westingh (WST)	49 1/2	- 3/8
Wetzelau (WET)	26 3/8	+ 1/2
Wisc Energy (WEC)	26 1/8	+ 3/8

## Special Notice

**REMODELING,** new construction, roof repair, masonry work. Reasonable rates. Hightree Construction, 375-4903. J23

## Real Estate

**FOR SALE:** Recently remodeled 3 bedroom home, 603 W. 2nd., Wayne. Call 375-1622 days or 375-4463 evenings. A1116

# HEALTH CARE DIRECTORY

**DENTIST**  
**DR. GEORGE H. GOBLIRSCH, D.D.S.**  
110 Main Street  
Wayne, Nebraska  
Phone 375-3200

**OPTOMETRIST**  
**WAYNE VISION CENTER**  
DR. DONALD E. KOEBER  
OPTOMETRIST  
313 Main St. Phone 375-2020  
Wayne, Ne.

**WAYNE DENTAL CLINIC**  
S.P. Becker, D.D.S.  
Mineshaft Mall  
Phone 375-2889

**PHARMACIST**  
**Will Davis, R.P.**  
375-4249  
**SAV-MOR PHARMACY**  
Phone 375-1444

**FITNESS**  
Free Weights, Squat Racks, Universal Machine, Rowing Machine, Sauna, Hot Tub & Showers are all available at **PROVIDENCE FITNESS CENTER** 6 a.m.-10 p.m. 7 days a week **CALL 375-1848** FOR MEMBERSHIP DETAILS

**REHABILITATION**  
**Madonna Rehabilitation Hospital**  
2200 South 52nd Street  
Lincoln, Nebraska 68506  
(402) 489-7102  
Providing comprehensive rehabilitation for head injury, spinal cord injury, burn injury, stroke, arthritis, orthopedic and neurological disorders.  
Member of the Benedictine System of Health Care.

**HEARING AIDS**  
**NOW AVAILABLE!!**  
Automatic Rechargeable Hearing Aids  
The Electronic Automatic Rechargeable Hearing Aids simultaneously enhance speech understanding while controlling background noise. For more information contact:  
**ROBERT WYLIE**  
Reclon Hearing Aids, P.C.  
1109 Norfolk Avenue Norfolk, NE 68701  
(402) 371-8435  
Tests available in our office or in your home!

**PHYSICIANS**  
**BENTHACK CLINIC**  
Robert B. Benthack, M.D.  
Benjamin J. Martin, M.D.  
Gary J. West, P.A.C.  
215 W. 2nd Street  
Phone 375-2500  
Wayne, Nebr.

**OPHTHALMOLOGIST**  
**MEDICAL EYE CLINIC**  
Eye Care You Can Trust  
371-8535  
H.D. Feldler, M.D.  
2800 W. Norfolk Ave.  
Norfolk, NE

**Norfolk Medical Group, P.C.**  
900 Norfolk Avenue  
402/371-3160  
Norfolk, Nebraska

**OPTOMETRIST**  
**FAMILY VISION CENTER**  
Quality & Complete Vision Care  
818 Ave E • Wisner  
529-3558

**General Surgery:** G.D. Adams, M.D., FACS; C.F. Hehner, M.D., FACS. **Pediatrics:** R.P. Votta, M.D., FAAP. **Family Practice:** T.J. Biga, M.D.; L.G. Handke, M.D.; W.F. Becker, M.D., FAAP; F.D. Doxon, M.D. **Internal Medicine:** W.J. Loar, M.D. **Psychiatry:** V. Canganelli, M.D. **Orthopedic Surgery:** D. Meyer, M.D. **Sorellis Clinic — Pflueger, Stanton.**

**MAGNUSON EYE CARE**  
Dr. Larry M. Magnuson  
Optometrist  
112 E. 2nd, Mineshaft Mall  
Wayne, NE 68787  
Phone 375-5160

**WAYNE FAMILY PRACTICE GROUP P.C.**  
Willis L. Wiseman, M.D.  
James A. Lindau, M.D.  
Dave Felber, M.D.  
214 Pearl Street Wayne, NE  
Phone 375-1600  
HOURS: Monday-Friday 8-12 & 1:30-4:30, Saturday 8-12

**PHYSICIANS**  
**Working with Nebraska physicians and other health professionals as a regional patient referral center and educational resource.**

**Challenging the FUTURE**  
**University of Nebraska Medical Center**  
42nd and Dewey Avenue  
Omaha, Nebraska 68105-1065

## Legal Notices

**NOTICE**  
Estate of Carroll Munson, Deceased.  
Notice is hereby given that on August 23, 1988, in the County Court of Wayne County, Nebraska, the Registrar issued a written statement of Informal Probate of the Will of said Deceased and that Conroy Munson whose address is Rural Route, Wakefield, Nebraska 68784, has been appointed Personal Representative of this estate. Creditors of this estate must file their claims with this Court on or before October 31, 1988, or be forever barred. All persons having a financial or property interest in said estate may demand or waive notice of any order or filing pertaining to said estate.  
(s) Pearla A. Benjamin  
Clerk of the County Court  
Olds, Swaris and Ensz  
Attorney for Applicant  
(Publ. Aug. 29, 8, 12)  
5 clips

**NOTICE**  
Estate of Susann E. Olson, Deceased.  
Notice is hereby given that the Personal Representative has filed a report of his administration, a formal closing petition for complete settlement for formal probate of will of said deceased, for determination of heirship, and a petition for determination of inheritance tax, which have been set for hearing in the Wayne County, Nebraska Court on September 8, 1988, at 10:00 o'clock a.m.  
(s) Pearla A. Benjamin  
Clerk of the County Court  
Olds, Swaris and Ensz  
Attorney for Petitioner  
(Publ. Aug. 15, 22, 29)  
7 clips

**PUBLIC NOTICE**  
Notice is hereby given that a Public Hearing will be held at 11 a.m. on Tuesday, September 6, 1988 by the County Commissioners in their meeting room at the Courthouse. The purpose of the hearing is to amend the 1988/1989 FY budget to include the Federal Forfeiture Fund.  
Oregatha C. Morris  
Wayne County Clerk  
(Publ. Aug. 29)

**NOTICE OF MEETING**  
City of Wayne, Nebraska.  
Notice is hereby given that a meeting of the Mayor and Council of the City of Wayne, Nebraska will be held at 7:30 o'clock p.m. on August 30, 1988 at the regular meeting place of the Council, which meeting will be open to the public. An agenda for such meeting, kept continuously current is available for public inspection at the office of the City Clerk at the City Hall, but the agenda may be modified at such meeting.  
Carol Brummond, City Clerk  
(Publ. Aug. 29)

Every government official or board that handles public moneys, should publish at regular intervals an accounting of it showing where and how each dollar is spent. We hold this to be a fundamental principle to democratic government.

## Cards of Thanks

A THANK YOU to all who visited, sent cards and telephone calls to me while I was hospitalized. A special thanks to Dr. Desai, nurses at the Lutheran Hospital and to Rev. Marvin Coffey for his visits. Everything was greatly appreciated. Nels A. Nelson. A29

Deadline for all legal notices to be published by The Wayne Herald is as follows: 5 p.m. Monday for Thursday's newspaper and 5 p.m. Thursday for Monday's newspaper.

## AGENDA WAYNE CITY COUNCIL August 30, 1988

- 7:30 Call to Order
- Approval of Minutes
- Approval of Claims
- Petitions and Communications
- Visitors
- Review Liquor License Manager Application 7-Eleven Store
- Review Request Special Designated Liquor Permit City Fire Department Dance
- Review Department of Roads Agreement for Bridge North on Highway 15
- Review Request Special Designated Liquor Permit Richard Pflanz
- Review of Final Chapters of Personnel Manual
- Mayoral Appointments
- Adjourn

# T A L K A B O U T . HIGH RETURNS

At the end of the nearest rainbow...

**8.00%**  
**6-Month Certificate of Deposit**

Rates are for \$10,000 deposit. Substantial penalty for early withdrawal.

**FIRST FEDERAL LINCOLN** **ESLIC**